

KURZWEIL®

Ka E1



ST-2 STAND

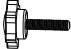
Assembly Guide

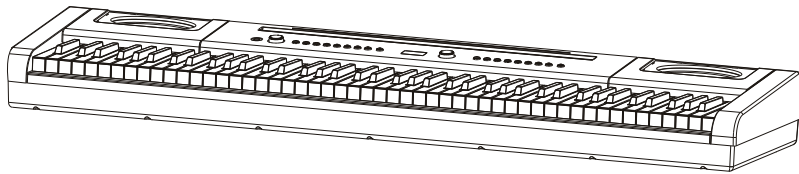
HDC YOUNG CHANG
MUSIC

ASSEMBLING YOUR FURNITURE STAND

Hardware Enclosed

- A.  x4 M6 Barrel Nuts
B.  x4 M6x40 Bolt Screws

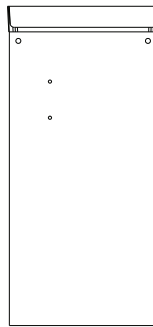
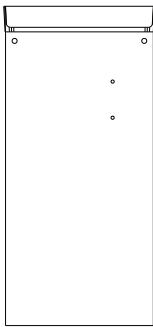
- C.  x8 Screw Caps
D.  x4 M5x25 Hand Bolts



1. Piano

2. Crosspiece

3. Left and Right Legs

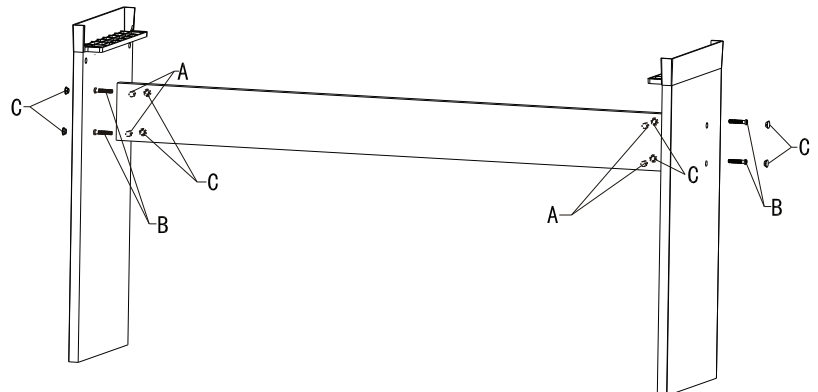


Assembling the Stand

Begin assembling the piano by attaching the legs to the crosspiece.

Step 1

The overall view of the assembly image is on the right. Begin by inserting one barrel nut (A) into the crosspiece. It is important to line up the barrel nut properly in the crosspiece.

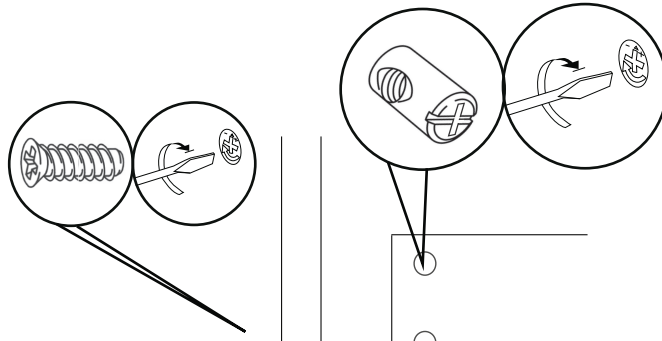


ASSEMBLING YOUR FURNITURE STAND (continued)

Attaching the legs to crosspiece

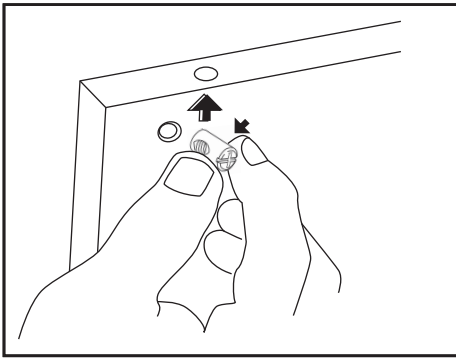
Step 2

Put the barrel nut into the crosspiece as shown, make sure it is in the proper position to receive the left screw.



Step 3

Tighten until the crosspiece is flush with the leg brackets and the legs are firmly attached.



Please make sure to properly fasten the bolt through the leg and into the barrel nut. To avoid any cross threading use two screw drivers, one to hold the barrel nut steady and one to screw the bolt into the barrel nut.

Attaching the piano to the stand

Step 4

Lift the piano onto its stand and align the holes in the stand legs with the holes on bottom of the piano.

Insert the hand bolts (D) into each hole to attach the piano to its stand as shown in the insert picture.

