

KURZWEIL®

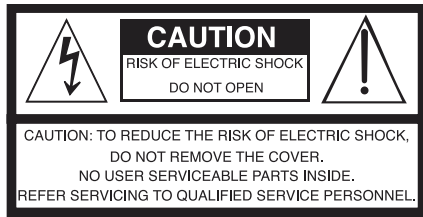
Ka S1

USER'S  
MANUAL

English Manual

HDC YOUNG CHANG





The lightning flash with the arrowhead symbol, within an equilateral triangle is intended to alert the user to the presence of uninsulated "dangerous voltage" within the product's enclosure that may be of sufficient magnitude to constitute a risk of electric shock to persons.



The exclamation point within an equilateral triangle is intended to alert the user to the presence of important operating and maintenance (servicing) instructions in the literature accompanying the product.

## IMPORTANT SAFETY & INSTALLATION INSTRUCTIONS

### INSTRUCTIONS PERTAINING TO THE RISK OF FIRE ELECTRIC SHOCK , OR INJURY TO PERSONS

**WARNING:** When using electric products, basic precautions should always be followed, including the following:

1. Read all the Safety and Installation Instructions and Explanation of Graphic Symbols before using the product.
2. This product must be grounded. If it should malfunction or break down, grounding provides a path of least resistance for electric current to reduce the risk of electric shock. This product is equipped with a power supply cord having an equipment-grounding conductor and a grounding plug. The plug must be plugged into an appropriate outlet which is properly installed and grounded in accordance with all local codes and ordinances.  
**DANGER:** Improper connection of the equipment-grounding conductor can result in a risk of electric shock. Do not modify the plug provided with the product – if it will not fit the outlet, have a proper outlet installed by a qualified electrician. Do not use an adaptor which defeats the function of the equipment-grounding conductor. If you are in doubt as to whether the product is properly grounded, check with a qualified serviceman or electrician.
3. Do not use this product near water for example, near a bathtub, washbowl, kitchen sink, in a wet basement, or near a swimming pool, or the like.
4. This product should only be used with a stand or cart that is recommended by the manufacturer.
5. This product, either alone or in combination with an amplifier and speakers or headphones, may be capable of producing sound levels that could cause permanent hearing loss. Do not operate for a long period of time at a high volume level or a level that is uncomfortable. If you experience any hearing loss or ringing in the ears, you should consult an audiologist.
6. This product should be located so that its location or position does not interfere with its proper ventilation.
7. The product should be located away from heat sources such as radiators, heat registers, or other products that produce heat.
8. The product should be connected to a power supply only of the type described in the operating instructions or as marked on the product.
9. This product may be equipped with a polarized line plug (one blade wider than the other). This is a safety feature. If you are unable to insert the plug into the outlet, contact an electrician to replace your obsolete outlet. Do not defeat the safety purpose of the plug.
10. The power supply cord of the product should be unplugged from the outlet when left unused for a long period of time. When unplugging the power supply cord, do not pull on the cord, but grasp it by the plug.
11. Care should be taken so that objects do not fall and liquids are not spilled into the enclosure through openings.
12. The product should be serviced by qualified service personnel when:
  - A. The power supply cord or the plug has been damaged;
  - B. Objects have fallen, or liquid has been spilled into the product;
  - C. The product has been exposed to rain;
  - D. The product does not appear to be operating normally or exhibits a marked change in performance;
  - E. The product has been dropped, or the enclosure damaged.
13. Do not attempt to service the product beyond that described in the user maintenance instructions. All other servicing should be referred to qualified service personnel.
14. **WARNING:** Do not place objects on the product's power supply cord, or place the product in a position where anyone could trip over, walk on, or roll anything over cords of any type. Do not allow the product to rest on or be installed over cords of any type. Improper installations of this type create the possibility of a fire hazard and/or personal injury.

## RADIO AND TELEVISION INTERFERENCE

**WARNING:** Changes or modifications to the instrument not expressly approved by Young Chang could void your authority to operate the instrument.

**IMPORTANT:** When connecting this product to accessories and/or other equipment use only high quality shielded cables.

**NOTE:** This instrument has been tested and found to comply with the limits for a Class B digital device, pursuant to Part 15 of the FCC Rules. These limits are designed to provide reasonable protection against harmful interference in a residential installation. This instrument generates, uses, and can radiate radio frequency energy and, if not installed and used in accordance with the instructions, may cause harmful interference to radio communications. However, there is no guarantee that interference will not occur in a particular installation. If this instrument does cause harmful interference to radio or television reception, which can be determined by turning the instrument off and on, the user is encouraged to try to correct the interference by one or more of the following measures:

- Reorient or relocate the receiving antenna.
- Increase the separation between the instrument and the receiver.
- Connect the instrument into an outlet on a circuit other than the one to which the receiver is connected.
- If necessary consult your dealer or an experienced radio/television technician for additional suggestions.

The normal function of this product may be disturbed by strong electro magnetic interference. If so, simply reset the product to resume normal operation by following the instruction manual. In case the function could not resume, please use the product in another location.

### NOTICE

This apparatus does not exceed the Class B limits for radio noise emissions from digital apparatus set out in the Radio Interference Regulations of the Canadian Department of Communications.

### AVIS

Le présent appareil numérique n'émet pas de bruits radioélectriques dépassant les limites applicables aux appareils numériques de la class B prescrites dans le Règlement sur le brouillage radioélectrique édicté par le ministère des Communications du Canada.

## SAVE THESE INSTRUCTIONS

## **IMPORTANT SAFETY INSTRUCTIONS**

1. Read these instructions.
2. Keep these instructions.
3. Heed all warnings.
4. Follow all instructions.
5. Do not use this apparatus near water.
6. Clean only with dry cloth.
7. When cleaning the top panel of the product, be sure to clean it with the power turned off as it may cause an error in operation.
8. Do not block any of the ventilation openings. Install in accordance with the manufacturer's instructions.
9. Do not install near any heat sources such as radiators, heat registers, stoves, or other apparatus (including amplifiers) that produce heat.
10. Do not defeat the safety purpose of the polarized or grounding-type plug. A polarized plug has two blades with one wider than the other. A grounding type plug has two blades and a third grounding prong. The wide blade or the third prong are provided for your safety. If the provided plug does not fit into your outlet, consult an electrician for replacement of the obsolete outlet.
11. Protect the power cord from being walked on or pinched, particularly at plugs, convenience receptacles, and the point where they exit from the apparatus.
12. Only use attachments/accessories specified by the manufacturer.
13. Use only with a cart, stand, tripod, bracket, or table specified by the manufacturer, or sold with the apparatus. When a cart is used, use caution when moving the cart/apparatus combination to avoid injury from tip-over.
14. Unplug this apparatus during lightning storms or when unused for long periods of time.
15. Refer all servicing to qualified service personnel. Servicing is required when the apparatus has been damaged in any way, such as power-supply cord or plug is damaged, liquid has been spilled or objects have fallen into the apparatus, the apparatus has been exposed to rain or moisture, does not operate normally, or has been dropped.
16. Allow adequate ventilation for the power adapter. Do not hide it under a carpet or behind a curtain or place it in an enclosed space where heat buildup can occur.



**WARNING:** To reduce the risk of fire or electric shock, do not expose this apparatus to rain or moisture.

Do not expose this equipment to dripping or splashing and ensure that no objects filled with liquids, such as vases, are placed on the equipment.

To completely disconnect this equipment from the AC Mains, disconnect the power supply cord plug from the AC receptacle.



## Kurzweil International Contacts

Contact the appropriate Kurzweil office listed below to locate your local Kurzweil representative.

### US Customers:

Artesia-Pro Inc.  
P.O. Box 2908  
La Mesa, CA 91943

Phone: 619/244-0006  
Email: support@artesia-pro.com

[www.artesia-pro.com](http://www.artesia-pro.com)

### Customers Outside the US:

HDC Young Chang Co., LTD.

South Korea  
Tel: +82 32 570 1000

[www.hdc-youngchang.com](http://www.hdc-youngchang.com)



<http://kurzweil.com>



[www.facebook.com/kurzweilhome/](http://www.facebook.com/kurzweilhome/)



<https://www.instagram.com/kurzweilmusic/>



[www.threads.net/kurzweilmusic](http://www.threads.net/kurzweilmusic)



[www.twitter.com/KurzweilMusic](http://www.twitter.com/KurzweilMusic)



[www.youtube.com/user/KurzweilTutorials](http://www.youtube.com/user/KurzweilTutorials)

**Chapter 1 Introduction ..... 7**  
 Key Features ..... 7

**Chapter 2 Getting Started ..... 8**  
 Setting Up the Ka S1 ..... 8  
 – Box Contents ..... 8  
 – Plugging in the Power ..... 8  
 – Volume Adjustment ..... 9

**Chapter 3 Ka S1 Overview ..... 10**  
 Control Panel ..... 10  
 – Power Button ..... 10  
 – Volume Slider ..... 10  
 – Control Knob ..... 10  
 – Select Button ..... 10  
     TEMPO ..... 10  
     LAYER VOLUME ..... 10  
     CHORUS ..... 10  
     REVERB ..... 10  
 – TRANSPOSE ..... 11  
 – LAYER ..... 11  
 – SPLIT ..... 11  
 – DUO ..... 11  
 – RECORD ..... 11  
 – PLAY/STOP ..... 11  
 – DEMO ..... 11  
 – METRONOME ..... 11  
 – TOUCH ..... 11  
 – VOICE ..... 11

I/O Ports ..... 12  
 – USB ..... 12  
 – PHONES ..... 12  
 – SUSTAIN (Pedal) ..... 12  
 – AUX IN ..... 12  
 – LINE OUT ..... 12

**Chapter 4 Ka S1 Details ..... 13**  
 – Power ..... 13  
 – Volume Adjustment ..... 13  
 – Control Knob/Button ..... 13  
 TEMPO ..... 13  
 LAYER VOL. .... 13  
 CHORUS ..... 13  
 REVERB ..... 14  
 – TRANSPOSE ..... 15  
 – LAYER ..... 15  
 – SPLIT ..... 15  
 – DUO ..... 16  
 – RECORD ..... 16  
 – PLAY/STOP ..... 17  
 – DEMO ..... 17  
 – METRONOME ..... 17  
 – FUNCTION ..... 19  
 – TUNE ..... 19  
 – LOCAL On/Off ..... 20  
 – TOUCH ..... 21  
 – EQ BASS ..... 22  
 – EQ TREBLE ..... 22  
 – RESET ..... 23  
 – VOICE ..... 23

**Chapter 5 Appendix**  
 A. Parameter adjusting instructions/Resetting Value ... 24  
 B. Advanced Functions Keyboard Chart ..... 25

**Specifications ..... 26**

Thank you for purchasing the KURZWEIL Ka S1.

You are certain to enjoy many hours exploring the Ka S1's features as well as its beautiful sounds.

This manual explains how to make the most of your Ka S1.

## Key Features

---

- 88 Semi-Weighted Hammer Action Keys
- 128 Note Polyphony
- 16 Preset Voices
- USB MIDI/Audio, AUX IN
- MIDI, Stereo, Line ports
- Intuitive User Interface

## Setting up the Ka S1

---

### Box Contents

---

The components provided when purchasing Ka S1 are as follows.

- Ka S1
- Sustain Pedal with Polarity Switch
- Warranty Card
- DC Power Adapter and AC Power Cord
- Music Sheet

The Ka S1 can also be powered by D cell alkaline batteries.

Remove the battery cover and insert the batteries, making sure to correctly observe the polarity orientation.

If you are missing any of the above, please contact your KURZWEIL dealer.

(Batteries are not included)

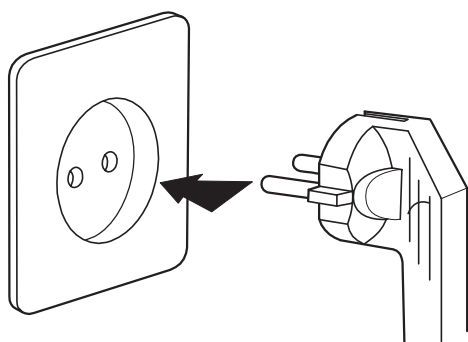
### Plugging in the Power

---

The Ka S1's power is supplied by a DC power adapter.

Connect the power adapter to the DC jack on the rear panel of the Ka S1.

Then connect the power cord to an AC outlet.



※ The shape of this plug differs depending on locality.

Press the power button at the rear panel to turn the power on.

When powered on, the front panel lights up.

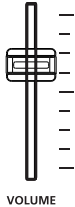


**CAUTION :** Please use the supplied DC power adapter. (12V, 2A center-tip positive)  
Using the wrong DC Power adapter may cause damage to the product.  
If the adapter is damaged or lost, please contact your KURZWEIL dealer.

---

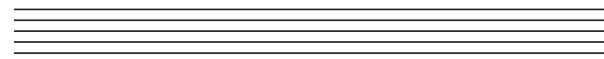
**Volume Adjustment**

---

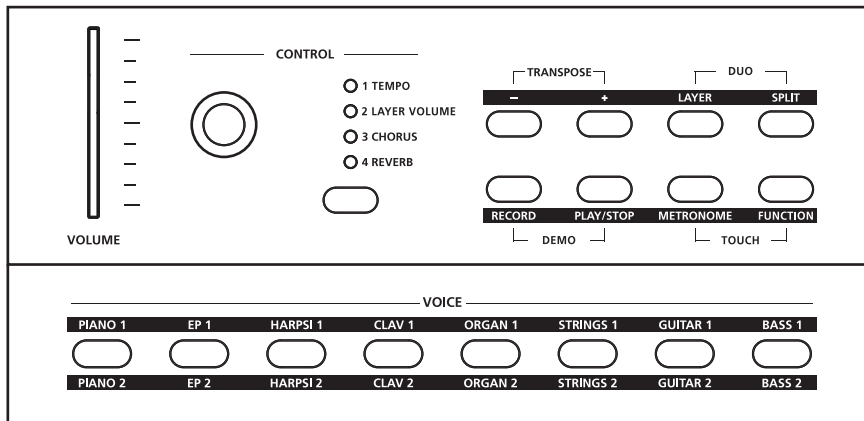


Before turning on the Ka S1, please set the volume to its minimum value (all the way to the down).

For a generally comfortable level of volume while playing, set the slider to its middle position.



**Control Panel**



**VOLUME SLIDER**

Adjusts the master volume.

**CONTROL KNOB**

Changes the value of a control item.

**SELECT BUTTON**

Selects items in the following order: TEMPO, LAYER VOLUME, CHORUS, REVERB.

**TEMPO**

Changes the tempo of the metronome.

**LAYER VOLUME**

Changes the level of layer volume in layer mode.

**CHORUS**

Adjusts the level of chorus effect.

**REVERB**

Adjusts the level of reverb effect.

---

**TRANSCOPE**

---

Adjusts the pitch of the Ka S1. (-/+ 12 ST)

**LAYER**

---

Combines two different voices across the keyboard, allowing you to play both voices as one.

**SPLIT**

---

Splits the keyboard into two regions, allowing you to play a different voice in each hand.

**DUO**

---

Divides the keyboard into two identical sections to support two different players, performing in tandem.

**RECORD**

---

Controls the recording of user songs.

**PLAY/STOP**

---

Controls the playback of the factory demos and metronome.

**DEMO**

---

Starts the playback of factory demos.

**METRONOME**

---

Changes the tempo and/or the time signature of the metronome.

**FUNCTION**

---

Used to change various global functions of the Ka S1.

**TOUCH**

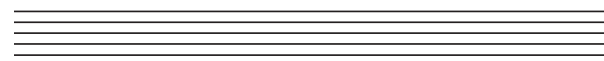
---

Changes the touch sensitivity of the Ka S1.

**VOICE**

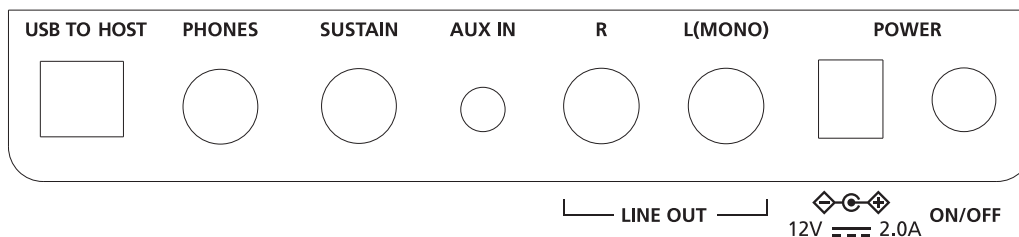
---

Used to select preset voices.



## I/O Ports

---



### USB

---

Connects to a PC, tablet or other devices to make use of the USB MIDI/ AUDIO functions. As such, the Ka S1 can serve as a USB audio card, MIDI controller and/or MIDI sound module. (USB MIDI/ Audio function is supported on Windows/ MacOS. An adapter cable may be required for connecting to a tablet PC.)

### PHONES

---

The Ka S1 has a 1/4" headphone jack. Plugging in headphones mutes the internal speakers, providing privacy during practice.



### SUSTAIN

---

Connect an Sustain pedal to The Ka S1.

### AUX IN

---

Receives an external audio signal through the cable and sends it to Ka S1's speakers.

### LINE OUT

---

For connecting to an external powered speaker, mixer or audio interface using cables.

### POWER BUTTON

---

Turns the Ka S1 on or off.



---

## POWER

---

Press the power button to turn the power on. When powered on, the LED lights up.

When powered on, the Auto Power function is enabled to conserve energy.

The Ka S1 will automatically turn off after 30 minutes of inactivity.

Pressing the FUNCTION button and then, pressing G#2 enters the Auto Power function edit mode. Press B0 to turn on the Auto Power function. Press A0 to turn off the the Auto Power function. Press FUNCTION button to exit the edit mode.

---

## VOLUME ADJUSTMENT

---

Adjusts master volume.

---

## CONTROL KNOB/BUTTON

---

Turn the Control Knob to change the value of a control item.

Press the Control button at the bottom of the items to select an item in the following order: TEMPO, LAYER VOLUME, CHORUS, REVERB.

---

## TEMPO

---

Select TEMPO by pressing the Control Button, then you can change the tempo of the metronome by turning the Control Knob.

---

## LAYER VOL.

---

Select LAYER VOL by pressing the Control Button, then you can change the volume of the layer by turning the Control Knob.

---

## CHORUS

---

The Ka S1 includes Chorus and Reverb effects.

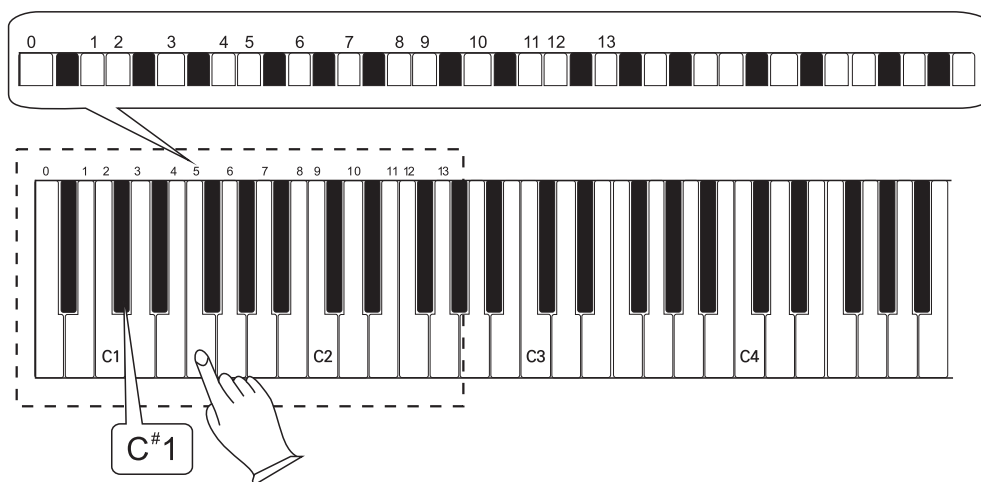
Select CHORUS by pressing the Control Button, then you can adjust the level of chorus effect.

To change the type of chorus effect, press the FUNCTION button and then, press C#2 to enter the edit mode.

# Chapter 4 Ka S1 Details

There are various types of the chorus effects as shown below. Press a key to select the desired type.

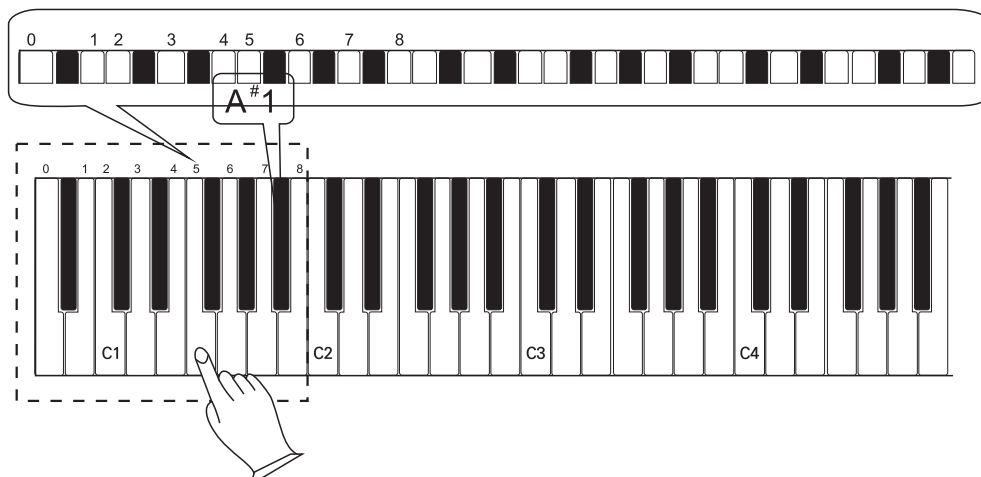
0=Off, 1=Chorus, 2=Chorus2, 3=Chorus3, 4=Chorus4, 5=Chorus Feedback,  
6=Flanger Short Delay, 7=Short Delay Feedback, 8=Flanger2, 9=Flanger3, 10=Celeste1,  
11=Celeste2, 12=Celeste3, 13=Celeste4



## REVERB

Select REVERB by pressing the Control Button, then you can adjust the level of reverb. To change the type of reverb effect, press the FUNCTION button and then, press A#1 to enter the edit mode. There are various types of the reverb effects as shown below. Press a key to select the desired type.

0=Off, 1=Room 1, 2=Room 2, 3=Rooms 3, 4=Hall 1, 5=Hall 2, 6=Plate, 7=Delay, 8=Echo.



---

## TRANSCOPE

---

Use the [-], [+] buttons to adjust the pitch of the Ka S1 (-/+ 12 ST)

The button will light up when pressed.

Press the [-][+] buttons simultaneously to return to the default setting.

---

## LAYER

---

Layer mode allows you to combine and play different programs at the same time across the same keys.

To activate Layer mode, select the first voice then press the [LAYER] button.

When Layer mode is activated, the button will light and the selected secondary voice will be blinking. To change the layer voice, use the voice buttons.

The selected voice button will blink.

---

## SPLIT

---

Split mode allows you to play different programs across defined regions (zones) on the keyboard.

To activate Split mode, press the SPLIT button. When Split mode is activated, the button will light and the selected voice button will be blinking. To change the voice for the left zone, use the voice buttons. The selected voice button will blink.

---

## SETTING VOLUME

---

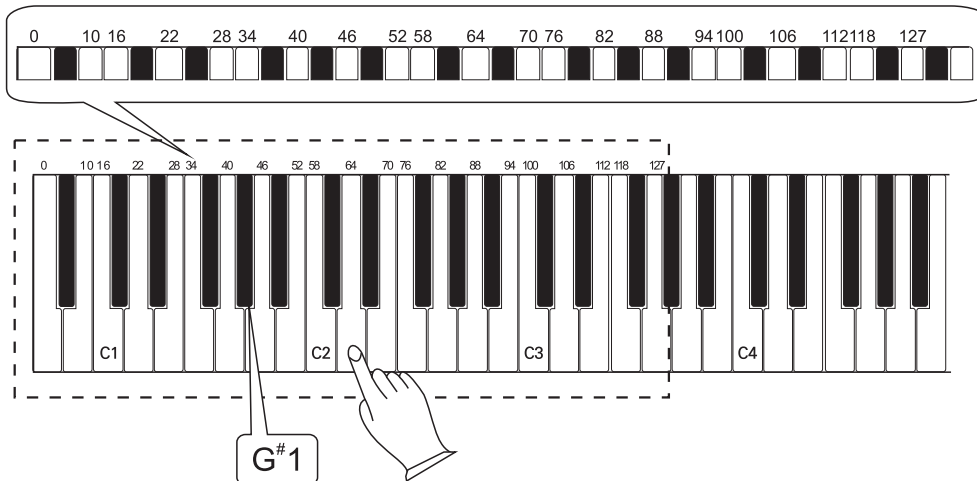
There are two different methods you can use to adjust the SPLIT volume:

1. Press and hold the [SPLIT] button and use [-], [+] buttons to adjust the level.

Press the [-].[+] buttons simultaneously to return to the default level.

2. Press the FUNCTION button to enter the edit mode.

Press G#1 to enter the SPLIT VOLUME menu. You can change the volume within the range from A0(0) to G3(127). Please see the Function menu instructions later in this chapter for more details.



Press the [FUNCTION] button again to exit the edit mode.

### Set the Split Point

Press and hold the [SPLIT] button and strike the desired piano key to set the split point.

If you press the [SPLIT] button again you will exit the Split mode.

### DUO

Press the [DUO] button to enter Duo mode. Duo mode splits the keyboard into two identical sections (defined below), supporting duets as well as teacher/student instruction.

**Left: A0 – C4**

**Right: C#4 – C8**

If you press the [DUO] button again you will exit the Duo mode.

### RECORD

The Ka S1 includes a built-in recorder.

Press the RECORD button and start playing. The RECORD button will blink and recording will begin when you press the piano keys.

To stop recording, press the RECORD button again.

---

## PLAY/STOP

---

To listen to the recorded song, press the [PLAY/STOP] button.

Press the PLAY/STOP button again to stop playback.

---

## DEMO

---

Press the [RECORD] button and the [PLAY/STOP] button together, to enter Demo mode.

### Playing a demo song

The Ka S1 includes 16 built-in demonstration songs.

Each demo song showcases a different voice.

### Select a demo song

In Demo mode, the first demo song heard is Piano 1.

You can select a different demo by pressing a different voice button.

### Stop playing a demo song

Press the [RECORD] button and the [PLAY/STOP] button together again to stop playback.

---

## METRONOME

---

Press [METRONOME] button to enter Metronome mode.

When Metronome mode is activated, the current tempo is shown on screen (default: 120 BPM).

### Changing Tempo

To change the tempo of the metronome, use the [-], [+] buttons. (range: 20–280)

### Changing Time Signature

When Metronome mode is activated, use the [-], [+] buttons to change the time signature (default: 4/4)

(1/4, 2/2, 2/4, 3/4, 4/4, 5/4, 6/4, 6/8, 7/8, 9/8, 12/8)

### METRONOME VOLUME

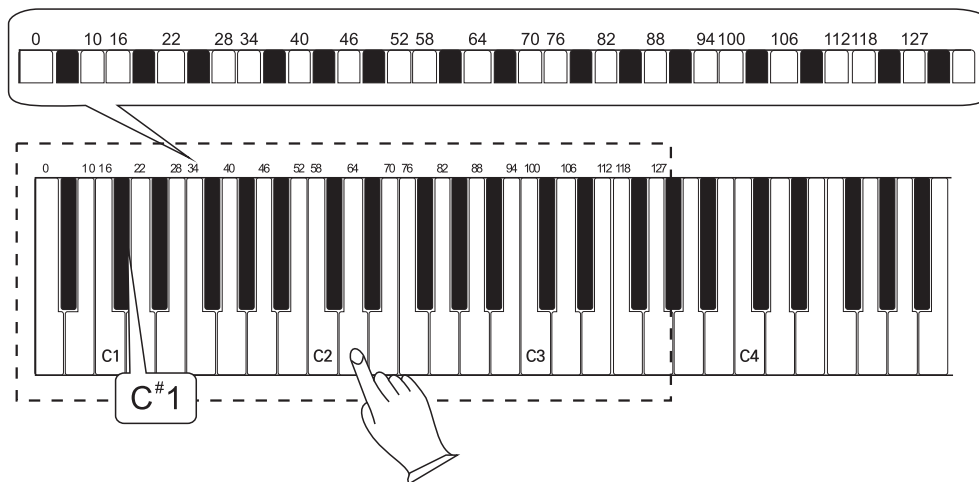
To change the level of the metronome volume:

1. Press and hold the [METRONOME] button and use the [-], [+] buttons to adjust the level. Press the [-], [+] buttons together, simultaneously, to return to the default level.

2. Press the [FUNCTION] button to enter the edit mode. Press C#1 to access the METRONOME VOL menu.

You can change the volume within the range from A0(0) to G3(127).

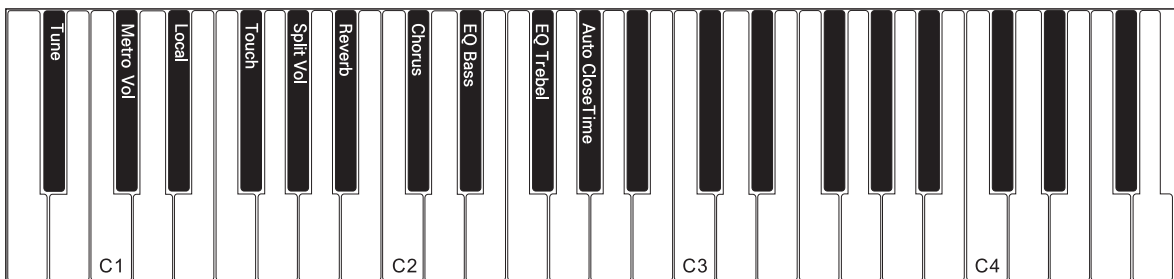
Press the desired key to set the volume level.



## FUNCTION

Press the [FUNCTION] button to access Function mode. The button will blink.

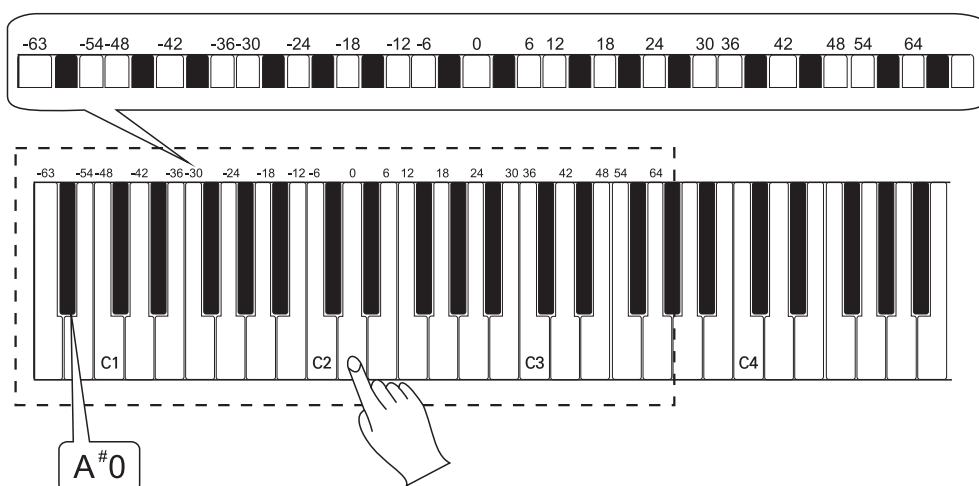
Select the desired Function by pressing the piano key corresponding to each setting as shown in the diagram below.



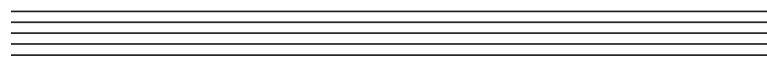
## TUNE

Inside of Function mode, press A#0 to select fine tuning.

The adjustable range is from A0(-63) to G2(64). Note: D2 is zero tuning adjustment.



Press the [FUNCTION] button again to exit Function mode.



---

### LOCAL On/Off

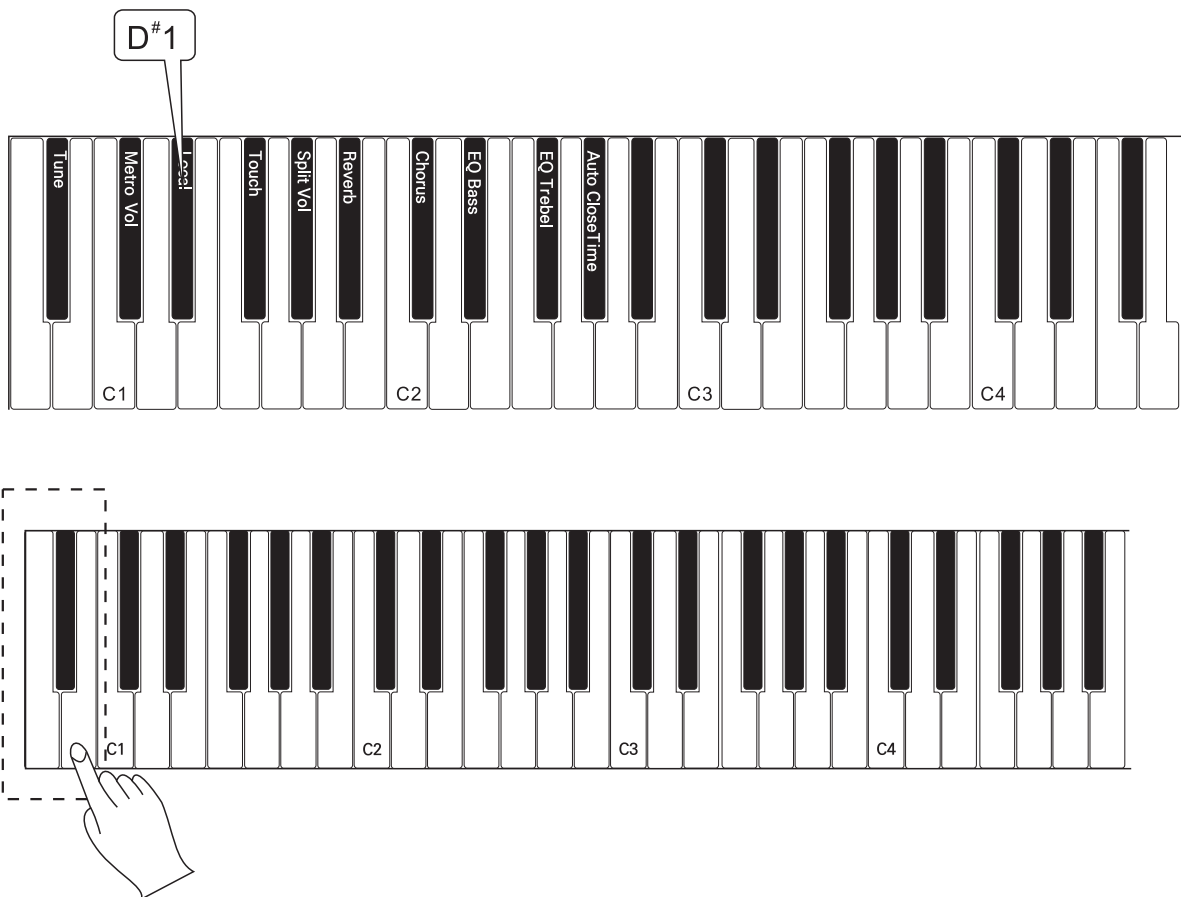
---

Inside of Function mode, press D#1 to select LOCAL On/Off.

On (default): The Ka S1 plays itself internally (locally)

Off: The Ka S1 will only transmit/receive data via MIDI

You can select On/Off with B0 and A0 (B0=On, A0=Off)



Press the [FUNCTION] button again to exit Function mode.



---

## TOUCH

---

Touch sensitivity affects the dynamic level while playing.

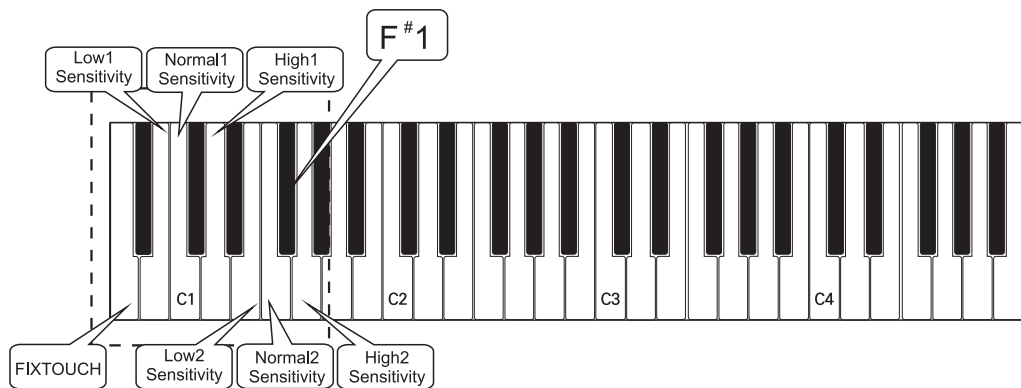
There are two methods available to adjust the touch of the Ka S1:

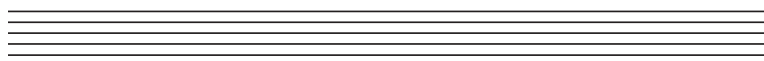
1. Press the [METRONOME] and [FUNCTION] buttons simultaneously.

The buttons will blink. You can change the touch sensitivity by using the [-], [+] buttons (0–6). Press the [METRONOME] and [FUNCTION] buttons again to exit the mode.

2. Press the FUNCTION button to enter the edit mode. Press F#1 to activate the touch sensitivity mode.

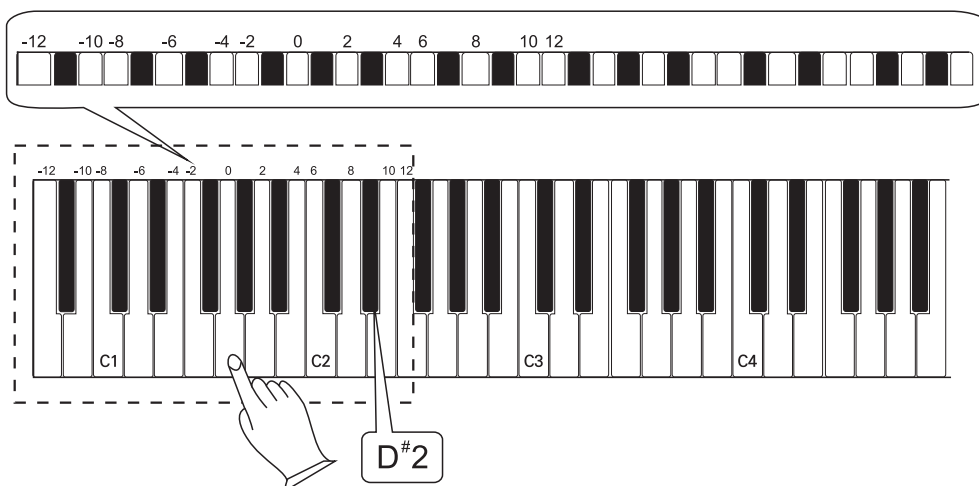
You can select different touch sensitivity settings by pressing the piano keys as shown below.





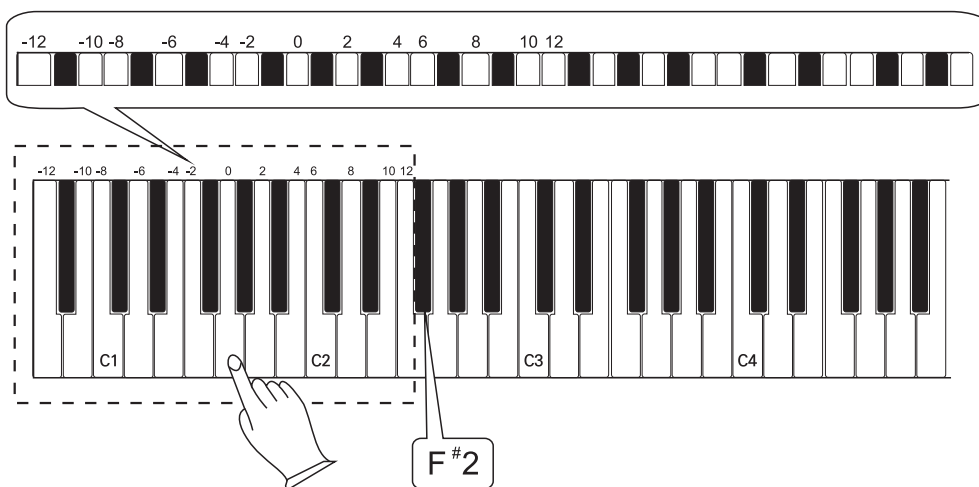
### EQ BASS

Inside of Function mode, press D#2 to select the Bass EQ. You can adjust the EQ bass level from A0(-12) to F2(12). Note: G1 is zero adjustment (flat).



### EQ TREBLE

Inside of Function mode, press D#2 to select the Bass EQ. You can adjust the EQ bass level from A0(-12) to F2(12). Note: G1 is zero adjustment (flat).



**RESET**

Performing a factory reset deletes all user settings and restores the Ka S1 to its original factory default state. To perform a reset:

1. Turn off the Ka S1
2. Turn on the Ka S1 while pressing and holding down the [-] and [+] buttons together
3. When all the panel LED light up, release the [-] and [+] buttons
4. Then LED lights will be returned to their initial state and the Ka S1 will be ready to play

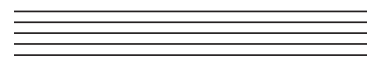
**VOICE**

The Ka S1 has 8 category buttons. Each category has 2 voices.

The primary voice lights up red. If you press the category button again, the secondary voice will be selected and light up green.

**PIANO / EP / HARPSI / CLAV / ORGAN / STRINGS / GUITAR / BASS**

CATEGORY NAME	VOICE	
PIANO	1 (1)	2 (9)
E.P	1 (2)	2 (10)
HARPSI	1 (3)	2 (11)
CLAV	1 (4)	2 (12)
ORGAN	1 (5)	2 (13)
STRINGS	1 (6)	2 (14)
GUITAR	1 (7)	2 (15)
BASS	1 (8)	2 (16)



**PARAMETER ADJUSTING INSTRUCTIONS**

Refer to the chart below. Select the corresponding key and set the desired value.

Key	Tune	Split Vol	Metro. Vol	Tempo	Treble EQ	Bass EQ
A0	-63	0	0	20	-12	-12
B0	-54	10	10	40	-10	-10
C1	-48	16	16	60	-8	-8
D1	-42	22	22	80	-6	-6
E1	-36	28	28	100	-4	-4
F1	-30	34	34	120	-2	-2
G1	-24	40	40	140	0	0
A1	-18	46	46	160	2	2
B1	-12	52	52	180	4	4
C2	-6	58	58	200	6	6
D2	0	64	64	220	8	8
E2	6	70	70	240	10	10
F2	12	76	76	260	12	12
G2	18	82	82	280	x	x
A2	24	88	88	x	x	x
B2	30	94	94	x	x	x
C3	36	100	100	x	x	x
D3	42	106	106	x	x	x
E3	48	112	112	x	x	x
F3	54	118	118	x	x	x
G3	64	127	127	x	x	x

**NOTE:**

Items marked with an x are not valid used.

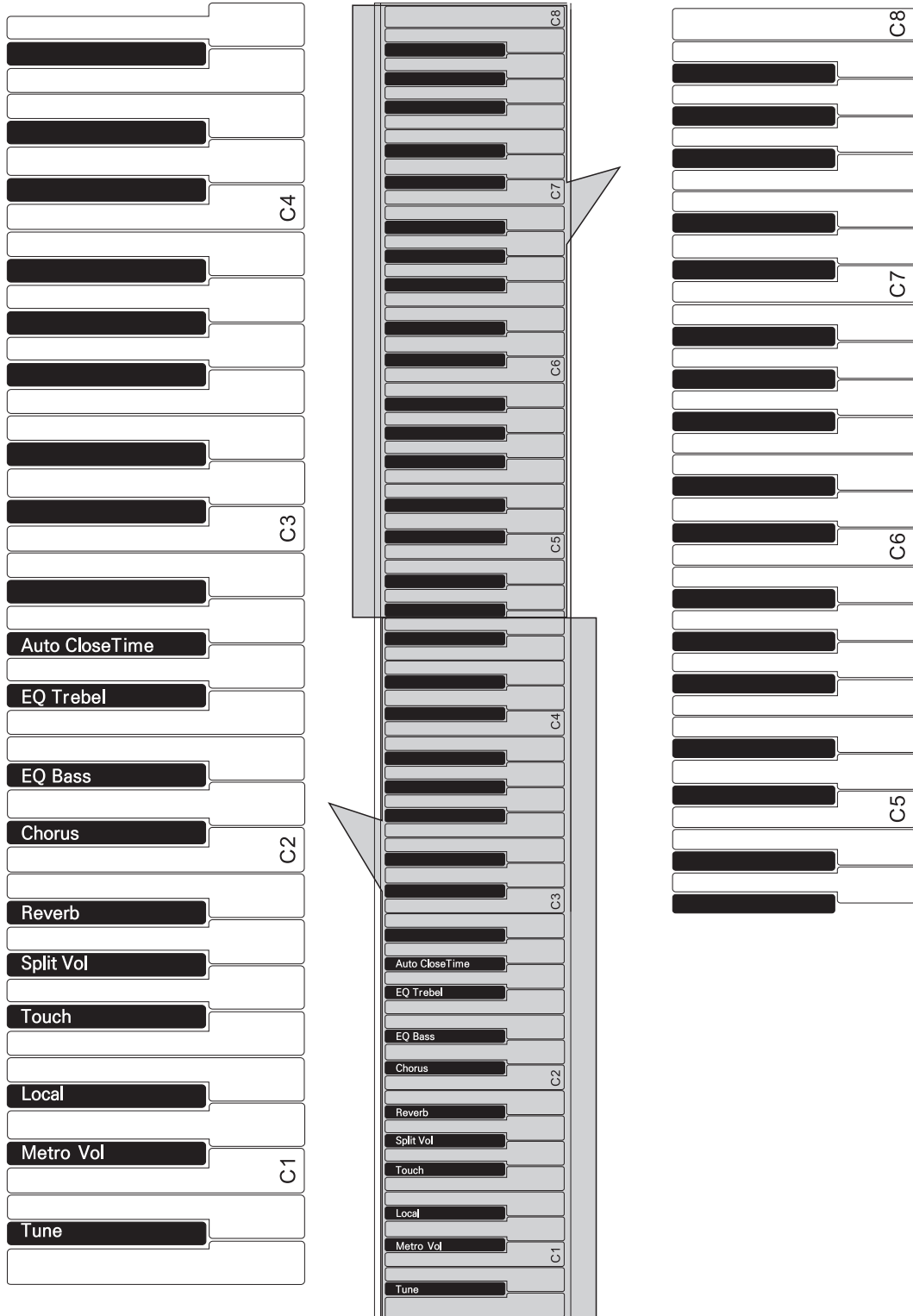
**RESET VALUES**

	Tune	Layer Vol	Split Vol	Metro. Vol	Local	Reverb Vol	Chorus Vol	Tempo	Trans.	Auto Power Off
Factory Default	0	75	127	100	OFF	15	0	120	0	ON

	Treble EQ	Bass EQ	Reverb Type	Chorus Type
Factory Default	0	0	5	13

## ADVANCED FUNCTIONS KEYBOARD CHART



# Specifications

<b>Keys</b>	88 Semi-Weighted Hammer Action Keys (S1)
<b>Polyphony</b>	128
<b>Voices</b>	16
<b>Recording</b>	1 Track 1 Song
<b>Metronome</b>	On/Off, Volume, Time Signature
<b>Transpose</b>	-/+12ST
<b>Tune</b>	-/+100ct
<b>Effects</b>	Reverb, Chorus, EQ Bass, EQ Treble
<b>Demo</b>	16
<b>USB</b>	16 MIDI channels, USB MIDI/Audio
<b>Line I/O</b>	RCA Stereo L/R x 1, 1/8" AUX in x 1
<b>Headphone Output</b>	1/4" Stereo out x 1
<b>Pedals</b>	Sustain pedal
<b>Amp</b>	15W x 2
<b>Speaker</b>	4 (2 woofers/ 2 tweeters)
<b>Included Accessories</b>	DC Power adapter, Music Sheet, Sustain Pedal (switch-type), Warranty Card, QR manual
<b>Size</b>	H 3.2" (8 cm) x D 11" (28 cm) x L 50" (127 cm)
<b>Weight</b>	19.8 lb (9 kg)
<b>Power</b>	DC Power adapter: 12V, 2.0A / Alkaline D cell batteries x 8 (batteries not included)



# KURZWEIL



<http://kurzweil.com>



[www.facebook.com/kurzweilhome/](http://www.facebook.com/kurzweilhome/)



<https://www.instagram.com/kurzweilmusic/>



[www.threads.net/kurzweilmusic](http://www.threads.net/kurzweilmusic)



[www.twitter.com/KurzweilMusic](http://www.twitter.com/KurzweilMusic)



[www.youtube.com/user/KurzweilTutorials](http://www.youtube.com/user/KurzweilTutorials)

HDC YOUNG CHANG