

KURZWEIL®

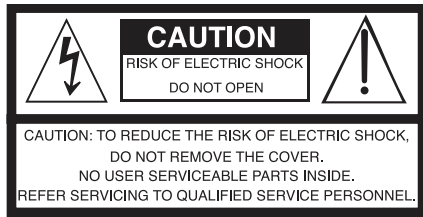
# ≡ MPS M1

# USER'S GUIDE

English Manual

HDC YOUNG CHANG

☰ MPS M1



The lightning flash with the arrowhead symbol, within an equilateral triangle is intended to alert the user to the presence of uninsulated "dangerous voltage" within the product's enclosure that may be of sufficient magnitude to constitute a risk of electric shock to persons.



The exclamation point within an equilateral triangle is intended to alert the user to the presence of important operating and maintenance (servicing) instructions in the literature accompanying the product.

## IMPORTANT SAFETY & INSTALLATION INSTRUCTIONS

### INSTRUCTIONS PERTAINING TO THE RISK OF FIRE ELECTRIC SHOCK , OR INJURY TO PERSONS

**WARNING:** When using electric products, basic precautions should always be followed, including the following:

1. Read all the Safety and Installation Instructions and Explanation of Graphic Symbols before using the product.
2. This product must be grounded. If it should malfunction or break down, grounding provides a path of least resistance for electric current to reduce the risk of electric shock. This product is equipped with a power supply cord having an equipment-grounding conductor and a grounding plug. The plug must be plugged into an appropriate outlet which is properly installed and grounded in accordance with all local codes and ordinances.  
**DANGER:** Improper connection of the equipment-grounding conductor can result in a risk of electric shock. Do not modify the plug provided with the product – if it will not fit the outlet, have a proper outlet installed by a qualified electrician. Do not use an adaptor which defeats the function of the equipment-grounding conductor. If you are in doubt as to whether the product is properly grounded, check with a qualified serviceman or electrician.
3. Do not use this product near water for example, near a bathtub, washbowl, kitchen sink, in a wet basement, or near a swimming pool, or the like.
4. This product should only be used with a stand or cart that is recommended by the manufacturer.
5. This product, either alone or in combination with an amplifier and speakers or headphones, may be capable of producing sound levels that could cause permanent hearing loss. Do not operate for a long period of time at a high volume level or a level that is uncomfortable. If you experience any hearing loss or ringing in the ears, you should consult an audiologist.
6. This product should be located so that its location or position does not interfere with its proper ventilation.
7. The product should be located away from heat sources such as radiators, heat registers, or other products that produce heat.

8. The product should be connected to a power supply only of the type described in the operating instructions or as marked on the product.
9. This product may be equipped with a polarized line plug (one blade wider than the other). This is a safety feature. If you are unable to insert the plug into the outlet, contact an electrician to replace your obsolete outlet. Do not defeat the safety purpose of the plug.
10. The power supply cord of the product should be unplugged from the outlet when left unused for a long period of time. When unplugging the power supply cord, do not pull on the cord, but grasp it by the plug.
11. Care should be taken so that objects do not fall and liquids are not spilled into the enclosure through openings.
12. The product should be serviced by qualified service personnel when:
  - A. The power supply cord or the plug has been damaged;
  - B. Objects have fallen, or liquid has been spilled into the product;
  - C. The product has been exposed to rain;
  - D. The product does not appear to be operating normally or exhibits a marked change in performance;
  - E. The product has been dropped, or the enclosure damaged.
13. Do not attempt to service the product beyond that described in the user maintenance instructions. All other servicing should be referred to qualified service personnel.
14. **WARNING:** Do not place objects on the product's power supply cord, or place the product in a position where anyone could trip over, walk on, or roll anything over cords of any type. Do not allow the product to rest on or be installed over cords of any type. Improper installations of this type create the possibility of a fire hazard and/or personal injury.

## RADIO AND TELEVISION INTERFERENCE

**WARNING:** Changes or modifications to the instrument not expressly approved by Young Chang could void your authority to operate the instrument.

**IMPORTANT:** When connecting this product to accessories and/or other equipment use only high quality shielded cables.

**NOTE:** This instrument has been tested and found to comply with the limits for a Class B digital device, pursuant to Part 15 of the FCC Rules. These limits are designed to provide reasonable protection against harmful interference in a residential installation. This instrument generates, uses, and can radiate radio frequency energy and, if not installed and used in accordance with the instructions, may cause harmful interference to radio communications. However, there is no guarantee that interference will not occur in a particular installation. If this instrument does cause harmful interference to radio or television reception, which can be determined by turning the instrument off and on, the user is encouraged to try to correct the interference by one or more of the following measures:

- Reorient or relocate the receiving antenna.
- Increase the separation between the instrument and the receiver.
- Connect the instrument into an outlet on a circuit other than the one to which the receiver is connected.
- If necessary consult your dealer or an experienced radio/television technician for additional suggestions.

The normal function of this product may be disturbed by strong electro magnetic interference. If so, simply reset the product to resume normal operation by following the instruction manual. In case the function could not resume, please use the product in another location.

### NOTICE

This apparatus does not exceed the Class B limits for radio noise emissions from digital apparatus set out in the Radio Interference Regulations of the Canadian Department of Communications.

### AVIS

Le présent appareil numérique n'émet pas de bruits radioélectriques dépassant les limites applicables aux appareils numériques de la class B prescrites dans le Règlement sur le brouillage radioélectrique édicté par le ministère des Communications du Canada.

## SAVE THESE INSTRUCTIONS

## **IMPORTANT SAFETY INSTRUCTIONS**

1. Read these instructions.
2. Keep these instructions.
3. Heed all warnings.
4. Follow all instructions.
5. Do not use this apparatus near water.
6. Clean only with dry cloth.
7. When cleaning the top panel of the product, be sure to clean it with the power turned off as it may cause an error in operation.
8. Do not block any of the ventilation openings. Install in accordance with the manufacturer's instructions.
9. Do not install near any heat sources such as radiators, heat registers, stoves, or other apparatus (including amplifiers) that produce heat.
10. Do not defeat the safety purpose of the polarized or grounding-type plug. A polarized plug has two blades with one wider than the other. A grounding type plug has two blades and a third grounding prong. The wide blade or the third prong are provided for your safety. If the provided plug does not fit into your outlet, consult an electrician for replacement of the obsolete outlet.
11. Protect the power cord from being walked on or pinched, particularly at plugs, convenience receptacles, and the point where they exit from the apparatus.
12. Only use attachments/accessories specified by the manufacturer.
13. Use only with a cart, stand, tripod, bracket, or table specified by the manufacturer, or sold with the apparatus. When a cart is used, use caution when moving the cart/apparatus combination to avoid injury from tip-over.
14. Unplug this apparatus during lightning storms or when unused for long periods of time.
15. Refer all servicing to qualified service personnel. Servicing is required when the apparatus has been damaged in any way, such as power-supply cord or plug is damaged, liquid has been spilled or objects have fallen into the apparatus, the apparatus has been exposed to rain or moisture, does not operate normally, or has been dropped.
16. Allow adequate ventilation for the power adapter. Do not hide it under a carpet or behind a curtain or place it in an enclosed space where heat buildup can occur.



**WARNING:** To reduce the risk of fire or electric shock, do not expose this apparatus to rain or moisture.

Do not expose this equipment to dripping or splashing and ensure that no objects filled with liquids, such as vases, are placed on the equipment.

To completely disconnect this equipment from the AC Mains, disconnect the power supply cord plug from the AC receptacle.

## Kurzweil International Contacts

Contact the appropriate Kurzweil office listed below to locate your local Kurzweil representative.

### US Customers:

American Music & Sound  
925 Broadbeck Dr #220  
Newbury Park, CA 91320

Tel: 800-431-2609  
Fax: 818-597-0411  
Email: [info@americanmusicandsound.com](mailto:info@americanmusicandsound.com)

### Customers Outside the US:

HDC Young Chang Co., LTD.

South Korea  
Tel: +82 32 570 1000

[www.hdc-youngchang.com](http://www.hdc-youngchang.com)



<http://kurzweil.com>



[www.facebook.com/kurzweilmusicsystems/](http://www.facebook.com/kurzweilmusicsystems/)



[www.instagram.com/KurzweilMusic](http://www.instagram.com/KurzweilMusic)



[www.threads.net/@kurzweilmusic](http://www.threads.net/@kurzweilmusic)

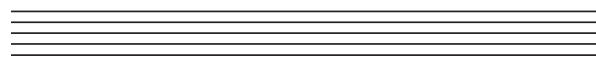


[www.twitter.com/KurzweilMusic](http://www.twitter.com/KurzweilMusic)



[www.youtube.com/user/KurzweilTutorials](http://www.youtube.com/user/KurzweilTutorials)

# Contents Table of Contents



<b>Chapter 1 Introduction</b> .....	<b>7</b>	<b>Chapter 4 MPS M1 Details</b> .....	<b>14</b>
Key Features .....	7	Selecting Preset Voices .....	14
<b>Chapter 2 Getting Started</b> .....	<b>8</b>	Editing User Preset .....	14
Setting Up the MPS-M1 .....	8	Playing Demo Songs .....	15
– Box Contents .....	8	Playing Metronome and Rhythm .....	16
– Plugging in the Power .....	8	Bluetooth MIDI/ AUDIO .....	16
– Volume Adjustment .....	9	Recording and Playback .....	17
– Using Headphones .....	9	Settings .....	18
– Music Stand Installation .....	10	<b>Appendix</b>	
Quick Guide .....	11	A. Preset Voice List .....	19
<b>Chapter 3 MPS M1 Overview</b> ...	<b>12</b>	B. Program List for Edit .....	20
Control Panel .....	12	Specifications .....	21
– Preset Button .....	12		
– Edit Button .....	12		
– Metronome/ Rhythm Button .....	12		
– Bluetooth Button .....	12		
– Record Button .....	12		
– Play/ Stop Button .....	12		
– Setting Button .....	12		
– –/+ Buttons .....	12		
I/O Ports .....	13		
– AUDIO IN .....	13		
– Line Out .....	13		
– Sustain Pedal .....	13		
– USB .....	13		
– Power Switch .....	13		

Thank you for purchasing the KURZWEIL MPS M1.

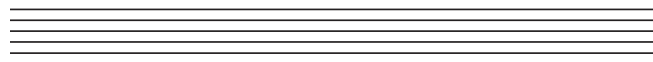
You are certain to enjoy many hours exploring the MPS M1's features as well as its beautiful sounds.

This manual explains how to make the most of your MPS M1.

## Key Features

---

- 88 Fully-Weighted Hammer Action Keys
- 256 Note Polyphony
- 50 Preset Voices, 10 User Presets (plus General MIDI / GM1 sound set)
- 8 Metronome Patterns and 10 Drum Rhythms
- USB MIDI and USB Audio
- Bluetooth MIDI and Bluetooth Audio
- Amp/ 12W x 4 Class-D
- 2 Headphone Jacks
- Half Damper Pedal Support (pedal sold separately)
- 3-Pedal Unit Support (sold separately)



## Setting up the MPS M1

---

### Box Contents:

---

- MPS M1
- DC Power Adapter and AC Power Cord
- Music Stand
- KP-1 Sustain Pedal
- Warranty Card
- USB Cable

If you are missing any of the above, please contact your KURZWEIL dealer.

It is always a good idea to keep the MPS M1's box, in case you ever need to ship it.

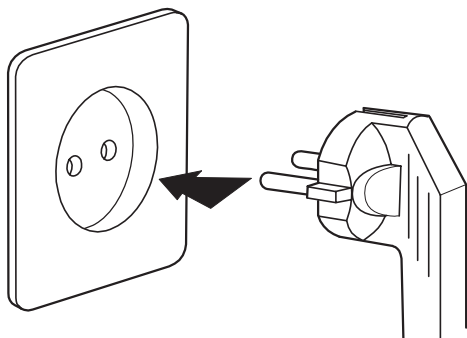
## Plugging in the Power

---

The MPS-M1's power is supplied by a DC power adapter.

Connect the power adapter to the DC jack on the rear panel of the MPS-M1.

Then connect the power cord to an AC outlet.



※ The shape of this plug differs depending on locality.



**CAUTION** : Please use the supplied DC power adapter. (15V, 2.5A center-tip positive). Using the wrong DC Power adapter may cause damage to the product. If the adapter is damaged or lost, please contact your KURZWEIL dealer.

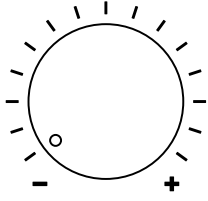
Press the power button at the rear panel to turn the power on.

When powered on, the front panel lights up.



### Volume Adjustment

---



Before turning on the MPS-M1, please set the volume to its minimum value (all the way to the left).

For a generally comfortable level of volume while playing, set the knob to its middle position.

The Main volume knob is located on the left side of the control panel. Turn it clockwise to increase the volume. Turn it counterclockwise to decrease the volume.

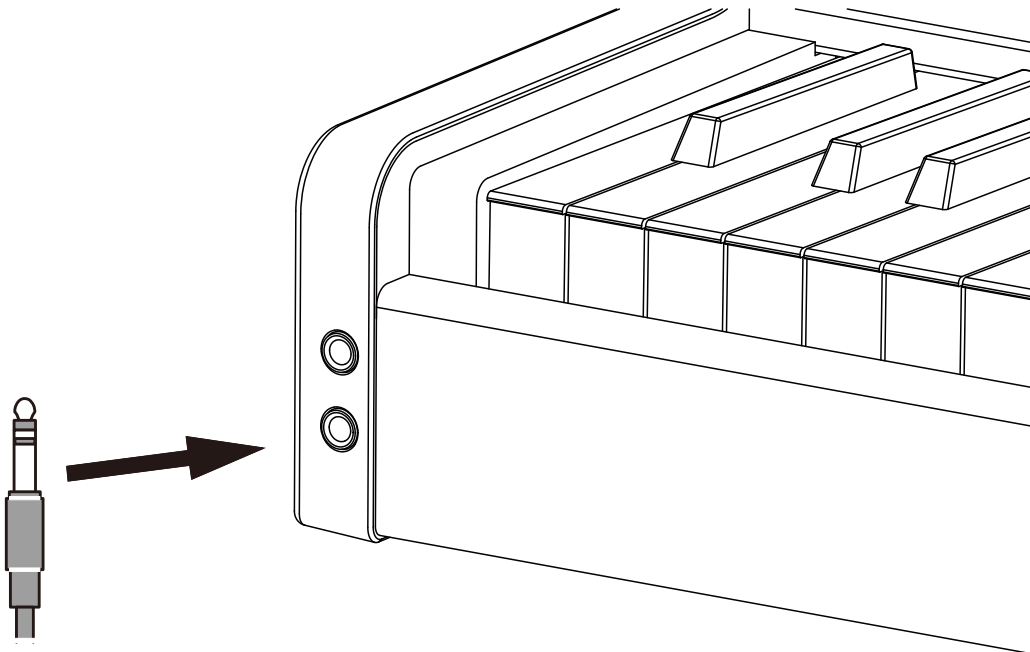
### Using Headphones

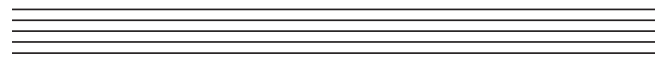
---

The MPS M1 has two 1/4" headphone jacks located on the left front edge of the keyboard cabinet.

Plugging in headphones mutes the internal speakers, providing privacy during practice.

The two jacks produce the same sound, so two people can play together and listen at the same time





**Music Stand Assembly**

---

1. Prepare the Music Stand

Remove the protective plastic film from the music stand.

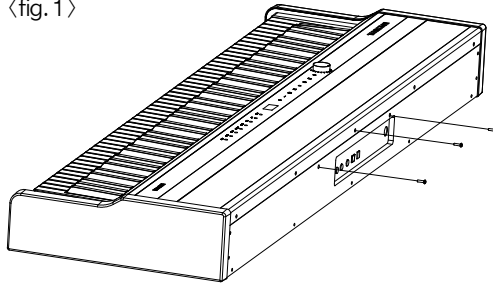
2. Attach the Music Stand

Remove the three screws located in the center of the MPS M1 rear panel. (fig. 1)

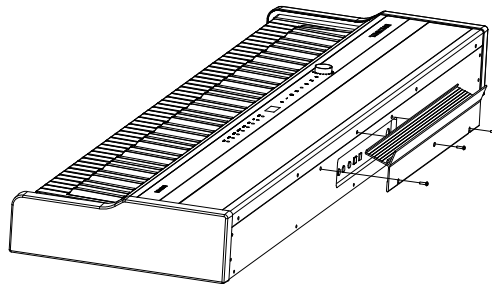
Place the music stand bracket in the center and fasten with the screws. (fig. 2)

Insert the music stand into the bracket. (fig. 3)

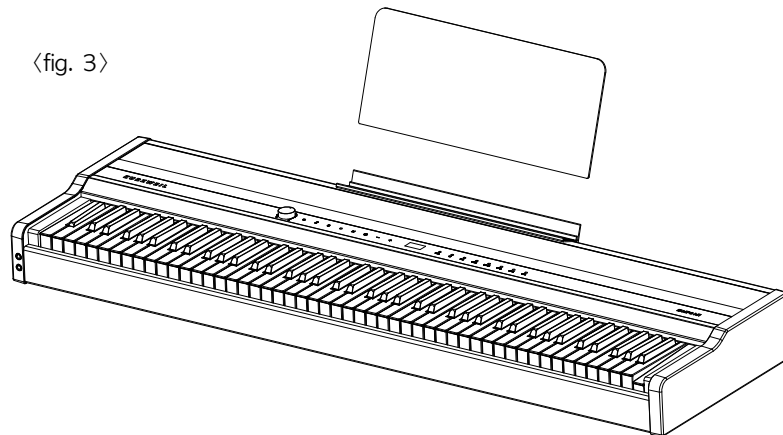
<fig. 1>



<fig. 2>



<fig. 3>



## Quick Guide

---

### Selecting a Program

1. When the MPS M1 is turned on, the panel lights up and “Bristol GP” is selected as the default program.
2. To select a different program, use the [-], [+] and/or category buttons.
3. To return to Program mode at any time press a [Category] button.

### Editing User Programs [🔧]

1. When you touch the [🔧] icon on the left side of the panel, the [🔧] button lights up and you can edit the selected User program. The top line of the display shows the User sound slot # on the left and the current Zone # on the right.
2. To select a different Zone (1–4) to edit, press and hold the [🔧] button then press the [-] and/or [+] buttons.
3. To navigate the Program Edit menu, press [●] and/or [▶] to move back and forth among the various parameter pages. Use the [-] and/or [+] to change the value of a selected parameter.

### Playing a Metronome or Rhythm Track [🎵]

1. Touch the [🎵] icon. The icon lights up and the metronome plays immediately. Use the [-]/[+] buttons to change the speed of the metronome.
2. To select a different metronome or rhythm pattern, press and hold the [🎵] button and, at the same time, tap the [-], and/or [+] button to make your selection.
3. To stop playing a metronome or rhythm pattern, press the [🎵] again.

### Using the Bluetooth MIDI/ AUDIO Functions [📶]

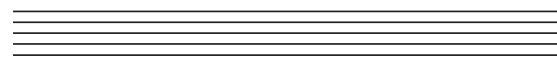
1. To activate the Bluetooth MIDI/ AUDIO functions, press the [📶] button. .
2. To connect the MPS M1 to your smartphone, laptop or other devices, press the [●] button to enter Bluetooth pairing mode and select 'KW-AUDIO' or 'KW-MIDI' from the list on your device.

### Recording [●]

1. Press [●]. The [●] button blinks indicating you are ready to record.
2. Recording will start as soon as you play a key.
3. To stop recording, press the [●] button again.
4. To listen to the recorded song, press the [▶] button.

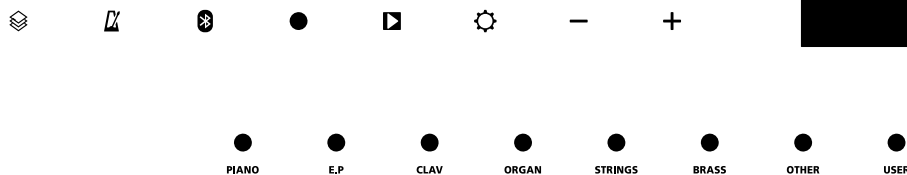
### Playing Demo Songs

1. To play a Demo song, press and hold the [⚙️] button for 2 to 3 seconds.
2. Use the [-]/[+] buttons to select different Demo songs.
3. To stop playback, press the [⚙️] button again.



## Control Panel

---



### Program

---

Change programs by pressing the various category buttons (PIANO, E.P, CLAV, etc) or [-]/[+] buttons..

### Edit

---

The Program edit menu is used to create your own split/layer combinations and then to store the creation to one of the 10 User slots.

### Metronome/ Rhythm

---

Activates/deactivates the Metronome/Rhythm mode.

### Bluetooth

---

Enables Bluetooth MIDI/ AUDIO functions.

### Recording

---

For recording and entering Bluetooth pairing mode.

### Play/Stop

---

Controls the playback of demo songs, recorded songs as well as any paired Bluetooth device.

### Settings

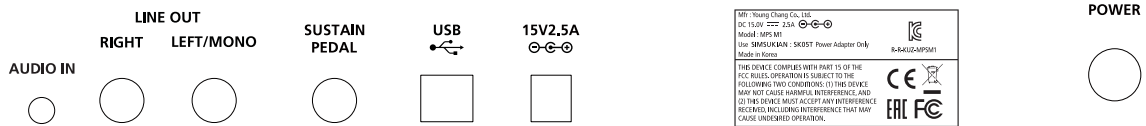
---

Used to change various global functions of MPS M1.



Used to adjust the values of the on screen parameters.

## IN/OUT panel



### AUDIO IN

Receives an external audio signal through 1/8"(3.5mm) cable and sends it to MPS M1's speakers or headphone jacks.

### LINE OUT

For connecting to an external powered speaker, mixer or audio interface using 1/4" unbalanced cables.

For mono operation, connect to the LEFT/MONO jack only. For stereo operation, connect a cable to both LEFT and RIGHT output jacks.

### SUSTAIN PEDAL

Connects to Kurzweil's standard sustain/switch-type pedal (KP-1, included) or half-damper pedal (KP-1H, sold separately).

### USB

Connects to a PC, tablet or other devices to make use of the USB MIDI/ AUDIO functions. As such, the MPS M1 can serve as a USB audio card, MIDI controller and/or MIDI sound module. (USB MIDI/ Audio function is supported on Windows/ MacOS. An adapter cable may be required for connecting to a tablet PC).

### Power Switch

Turns the MPS M1 on and off.

## Selecting a Program

---

Program mode lets you select and perform using the various instrument sounds built in to the MPS M1.

1. When the MPS M1 is turned on, the PIANO category lights up and “Bristol GP” is selected as the default program.
2. To select a different program, use the [–]/[+] and/or additional category buttons.
3. The MPS M1 offers both a Layer and Split mode for performing more than one sound at a time. Layer mode allows you to combine and play different programs at the same time across the same keys. Split mode allows you to play different programs across defined regions (zone) on the keyboard
4. To return to Program mode at any time press a [Category] button


## User Edit Mode (Creating Splits/Layers)


---

In the User Edit mode, you can specify up to 4 different zones (regions) to play across the keyboard. For each zone you can: (a) activate a given zone, (b) select a program (General MIDI – GM), (c) set the volume, (d) define the note range (Low/Hi Key), (e) transpose the zone, and (f) adjust the reverb/chorus effects.

Edited programs are automatically saved to the initially chosen UserSnd slot (1–10).

Note: User programs will be erased when you perform a factory reset.

1. To start, select one of the 10 User Program slots.
2. Tap the  icon to enter the User Edit mode.
3. Select a Zone.

To select a Zone to edit, press and hold the  icon then, at the same time, press the [–] and/or [+] buttons to scroll through zones 1–4. The current zone is displayed in the upper righthand portion of the screen.

4. Select a Zone Parameter.

Next, select a parameter to adjust, using the  and/or  to move back and forth through the various settings.

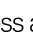
Zone Parameters


You can adjust the following, independently, per zone:

Active / Use the [−]/[+] buttons to activate or deactivate the zone (On/Off).

Sound / Use the [−]/[+] buttons to change the program (General MIDI list only). Reminder: if you press the [Cat] buttons you will exit the Edit mode.

Volume / Use the [−]/[+] buttons to change the volume level (range: 10–127).

Key Low / Press and hold the  icon, then, when 'Hit Key' is displayed, strike the desired piano key to establish the lowest note that zone will be able to sound.

Key Hi / Press and hold the  icon, then, when 'Hit Key' is displayed, strike the desired piano key to establish the highest note that zone will be able to sound.

Transpose / Use the [−]/[+] buttons to set the transpose amount (−/+ 12 ST).

#### 5. Adjust the Global FX.

Beyond the 6 zone-based parameters (listed above), you will find the following four Global FX related parameters used to dial in the right amount of reverb and chorus. These effects apply across all zones collectively.

Global FX Settings:


Rev. Type/ Use the [−]/[+] buttons to select the type of Reverb (Off, Room, Hall, Plate).

Rev. Level/ Use the [−]/[+] buttons to change the level of Reverb (range: 0–127).

Chr. Type/ Use the [−]/[+] buttons to select the type of Chorus (Off, Chorus 1, Chorus 2, Chorus 3).

Chr. Level/ Use the [−]/[+] buttons to change the level of Chorus (range: 0–127).

#### 6. Save


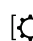
To save the User created split/layer sound, simply tap the  button to exit Edit Mode.

The system will automatically save your changes. You will note the UserSnd number on screen, ex UserSnd01. To recall this User sound at a later point, tap the User sound category button, then use the [−]/[+] buttons to select the desired User number (1–10).

## Playing Demo Songs

---

The MPS M1 includes several built-in demonstration songs.

1. Press and hold the  button to enter Demo mode and play a demo song.
2. When playback of the given demo ends, the next demo plays automatically. When all demo songs finish playing, playback will cycle back to the first demo.
3. To change demo songs to play, use the [−]/[+] buttons.
4. To stop playback of demo songs, press the  button.

### Playing Metronome and Rhythm Patterns

The Metronome and Rhythm functions help improve accuracy when practicing the piano. The MPS M1 offers a variety of metronome and rhythm accompaniment patterns.

1. Press the **[M]** button. It will light up and the metronome will begin playback.  
The metronome tempo will be displayed on screen.
2. To change the tempo of the metronome, use the **[-]/[+]** buttons.
3. To change the metronome or rhythm pattern, press and hold the **[M]** button and then use the **[-]/[+]** buttons to make your selection.

No.	1	2	3	4	5	6	7	8	9
Time signature/ Rhythm pattern	1/4	2/4	3/4	4/4	5/4	3/8	6/8	12/8	Rock
No.	10	11	12	13	14	15	16	17	18
Time signature/ Rhythm pattern	Swing	Funky	Pop 90's	Kick	Pop 80's	Blues	Jazz	Acid	Lounge

4. To stop the Metronome/Rhythm playback, press the **[M]** button again.



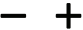


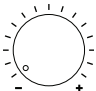
### Bluetooth MIDI/ AUDIO

Bluetooth technology allows you to wirelessly connect the MPS M1 to an external device (smartphone, laptop, etc.), passing Bluetooth Audio/MIDI signals to the external device and/or listening to music from the external device wirelessly on MPS M1. The MPS M1 allows Bluetooth MIDI and Bluetooth audio to be specified individually on the given device..

1. To activate, press the **[B]** icon. The button will light, an audible notification will be heard and onscreen you will see the Bluetooth controls menu.
2. Next, you must connect the intended Bluetooth compatible device to the MPS M1. This action is called "Pairing". To enter pairing mode, press the **[P]** button. The message "PAIRING" will briefly appear onscreen.
3. Next, in your external device's settings, select the Bluetooth device labeled "KURZWEIL". When the pairing is successful, you will hear a notification sound.
4. Once paired successfully, you can send/receive MIDI and audio signals between the external device and MPS M1.
5. The controls used in Bluetooth mode are as follows. Some applications/devices may not support all of the listed functions.



\* Bluetooth MIDI is available only with BLE MIDI compliant applications. Note: drivers for BLE MIDI are needed for WINDOWS/Android usage.

Button	Function	Description
	enter Program mode	To change programs, press the desired [Category] button then use the [-]/[+] buttons as usual to select programs
	Bluetooth on/off	To activate Bluetooth mode, press the [BT] button. To deactivate Bluetooth mode, press the [BT] button again
	change songs	Select the previous or next song on the connected external device.
	Play/Stop	Play or stop the current song on the connected external device.
	Pairing mode	Enter pairing mode to establish communications between the MPS M1 and an external device.
	Master volume	Press and hold the [BT] icon and, at the same time, use the [-]/[+] buttons to adjust the level of the external device.

## Recording/Playback

The recording function allows you to record and playback your performances.

1. Press the [●] button. The corresponding light will blink and the MPS M1 will be ready to record (record ready mode).  
(Note: if you press the [●] button again, the light will turn off and the MPS M1 will return to idle mode).
2. Start playing. The [●] light will stop blinking and recording will begin.  
(Caution: Once recording starts, previously recorded data will be erased.).
3. To stop recording, press the [●] button again. The light will turn off and recording will stop.
4. To listen back to the recorded song, press the [▶] button. The button will light and the song will play. After the song ends, the light will turn off.
5. To delete a recorded song, press and hold the [●] button while you simultaneously press the [▶] button. An onscreen notification “DeleteSng” will confirm that the song has been deleted.

- To record with an accompanying rhythm pattern, press the [🎵] button before you start to play. Alternatively, press the [●] button while in Metronome mode. The recording will be started after a 2 bar count-in.

## Settings

---

The Settings menu houses various global functions of the MPS M1:

- Press the [⚙️] button to enter Settings mode.
- Use the [▶] and/or [●] button to navigate the menu and select a given parameter. Use the [−] and [+] buttons to adjust the value of the selected parameter.

Setting Items	Description
Transpose	Globally adjust the pitch of the MPS M1 in semitones (-/+12 ST).
Tune	Globally adjust the fine tuning of the MPS M1 in cents (-/+100 ct).
Auto Power	To conserve energy, the MPS M1 will automatically turn off after a set period of inactivity. Auto Power Off Values: OFF, 15 minutes, 30 minutes, 1 hour, 2 hours, 4 hours and 8 hours.
MIDI Local	When working with a DAW, this switch should be set to Off. Doing so severs the MPS M1's ability to play itself internally (locally) and it will only transmit/receive data via MIDI. Local is set to On by default.
Touch	Adjust the touch sensitivity of the keyboard (Hard1-3, Normal 1-3, Light 1-3, FIX). Normal 1 is the default.
Aux. In Vol	Adjust the level of the back panel external input (range: 0-127).
USB Rec. Vol	Adjust the level of USB audio output.
Panic	Sends a MIDI "ALL NOTES OFF" message.
Reset	Restores the MPS M1 to its factory default settings. To perform a reset, select Reset and press the [+] button. You will be prompted "Really?". Press the [+] button again to confirm. Press the [-] button to cancel. * Caution: Resetting will erase all user data and settings. *
Version	Displays the current software versions.

# Appendix-A

## Preset Voice List

Category	NO.	Preset Name	Category	NO.	Preset Name
PIANO	1	BristolGP	ORGAN	26	Fullrank
	2	ConcertGP	STRINGS	27	DynString
	3	StudioGP		28	SlowStr1
	4	Recital		29	SlowStr2
	5	TrioSplit		30	StrEns1
	6	Piano&AnStr		31	StrEns2
E.P	7	VintageEP		BRASS	32
	8	BalladEP	33		Orch.Set
	9	CleanEP	34		Pastoral
	10	TinyEP	35		Brs&Str
	11	FM Bell	36		Brass1
	12	EP&Slap	37		Brass2
CLAV	13	SP Clav	OTHER	38	BrsOctave
	14	PhaClav1		39	Flute
	15	ChoClav		40	Winds Ens
	16	PhaClav2		41	Warm Pad
	17	Harpsi		42	NaPad
	18	FarHarpsi		43	SteelBody
ORGAN	19	PhaHarpsi	44	OvdGtrLd	
	20	FastRtry	45	Fng.Bass	
	21	E.Org Mix	46	Ac.Bass	
	22	Perc.Org	47	Slap Bass	
	23	SlowRtry	48	DrumKit1	
	24	Principal	49	DrumKit2	
	25	Venedict	50	DrumKit3	

# Appendix-B

## GM Program List for use in Edit mode

NO.	Program Name	NO.	Program Name	NO.	Program Name
0	Aco.G.Pno	43	DoublBass	86	Fifths
1	Bri.G.Pno	44	Trmol.Str	87	Bass Lead
2	Elc.G.Pno	45	Pizct.Str	88	New Age
3	HonkyTonk	46	Orch.Harp	89	Warm
4	Elec.Pno1	47	Timpani	90	Polysynth
5	Elec.Pno2	48	StrEnsbl1	91	Choir
6	Harpsichd	49	StrEnsbl2	92	Bowed
7	Clavinet	50	SynthStr1	93	Metallic
8	Celesta	51	SynthStr2	94	Halo
9	Glokenspl	52	VoiceAahs	95	Sweep
10	Music box	53	VoiceOohs	96	Rain
11	Vibraphon	54	Syn.Voice	97	SoundTrak
12	Marimba	55	Orch.Hit	98	Crystal
13	Xylophone	56	Trumpet	99	Atmosphre
14	Tubla.Bel	57	Trombone	100	Brightnes
15	Dulcimer	58	Tuba	101	Goblins
16	DrwBarOrg	59	MuteTrmpt	102	Echoes
17	PrcusvOrg	60	FrenchHrn	103	Sci-Fi
18	RockOrg	61	BrassSctn	104	Sitar
19	Chrch.Org	62	SynthBrs1	105	Banjo
20	ReedOrgan	63	SynthBrs2	106	Shamisen
21	Accordion	64	Sprno.Sax	107	Koto
22	Harmonica	65	Alto.Sax	108	Kalimba
23	TangoAcn	66	Tenor Sax	109	Bagpipe
24	NnylonGtr	67	BaritnSax	110	Fiddle
25	Steel Gtr	68	Oboe	111	Shanai
26	Jazz Gtr	69	EnglshHrn	112	TinkleBel
27	Clean Gtr	70	Bassoon	113	Agogo
28	Muted Gtr	71	Clarinet	114	SteelDrum
29	OvDrv.Gtr	72	Piccolo	115	WoodBlock
30	Dist.Gtr	73	Flute	116	TaikoDrum
31	GtrHamnic	74	Recorder	117	MelodcTom
32	Acst.Bass	75	Pan Flute	118	SynthDrum
33	Fing.Bass	76	Blown Btl	119	RvrsCymb1
34	Pick.Bass	77	Shakuhach	120	GtFrtNois
35	Fret.Bass	78	Whistle	121	BrethNois
36	Slp.Bass1	79	Ocarina	122	Seashore
37	Slp.Bass2	80	Square	123	BirdTweet
38	Syn.Bass1	81	Sawtooth	124	TlepneRng
39	Syn.Bass2	82	Calliope	125	Helicoptr
40	Violin	83	Chiff	126	Applause
41	Viola	84	Charang	127	Gunshot
42	Cello	85	Voice		

# Specifications

<b>Keys</b>	88 Fully-Weighted Hammer Action Keys (Fatar TP110)
<b>Display</b>	128x64 Resolution 1.2" OLED
<b>Polyphony</b>	256
<b>Voices</b>	50 Preset Voices, 10 User Presets (128 GM sound list)
<b>Recording</b>	1 Track 1 Song
<b>Metronome/Rhythm</b>	8 Metronome Patterns and 10 Drum Rhythms
<b>USB</b>	USB MIDI and USB Audio
<b>Bluetooth</b>	Bluetooth MIDI and Bluetooth Audio
<b>Line I/O</b>	1/4" Unbalanced Connector x 2 (Left and Right), 1/8" Audio Input x 1
<b>Headphone Output</b>	1/4" Stereo Connector x2
<b>Pedals</b>	1/4" TRS Connector x 1 (switch/half damper pedal), 5-pin connector on the bottom (3-pedal unit only)
<b>Amp</b>	12W X 4 Class D
<b>Speaker</b>	Two 3"x5" LF drivers x Two 2" HF drivers
<b>Included Accessories</b>	Music Stand, Sustain Pedal (switch-type)
<b>Optional Accessories (sold separately)</b>	Half Damper Sustain Pedal, MPS M1 Stand (3-Pedal Unit included)
<b>Size</b>	52in x 15in x 5.1in / 1320mm x 380mm x 130mm
<b>Weight</b>	39lb / 17.7Kg
<b>Power</b>	DC Power adapter: 15V, 2.5A



**KURZWEIL**

**KURZWEIL**

**HDC** YOUNG CHANG