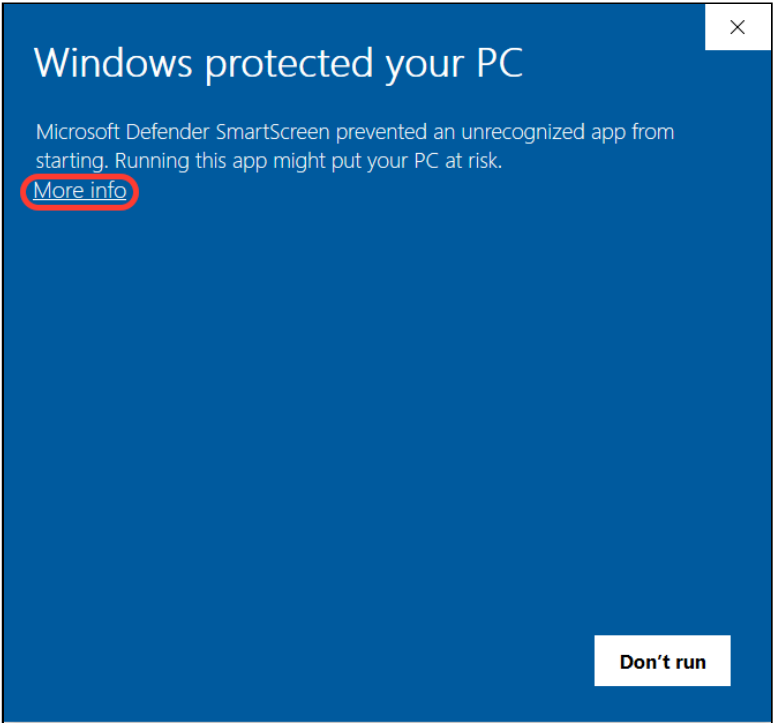


For tech support related to the operation of SoundTower software, please contact SoundTower directly via their website [SUPPORT PORTAL](#).

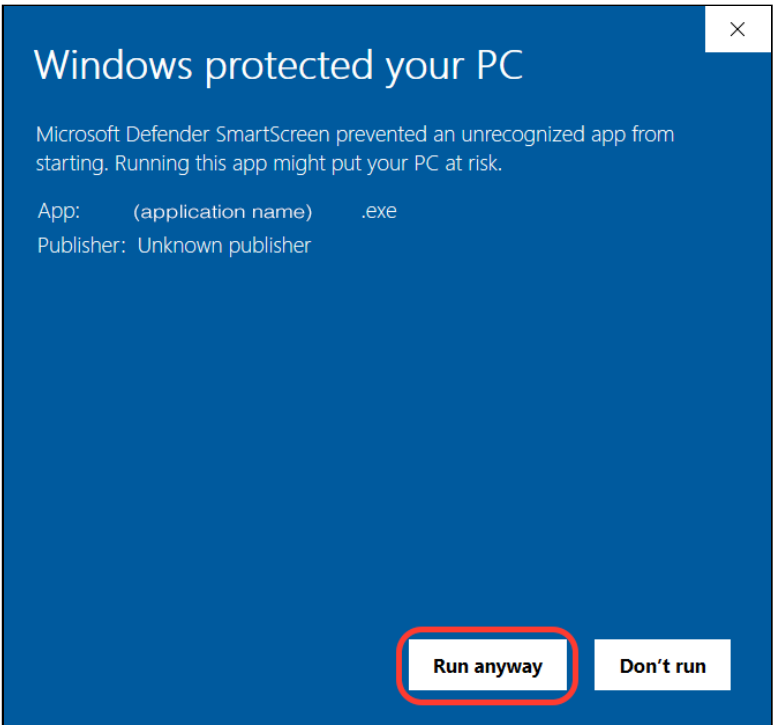
Windows - Installation Notes

To install the application, follow these steps. Note: the screens displayed are only examples, similar to what you might see on your PC:

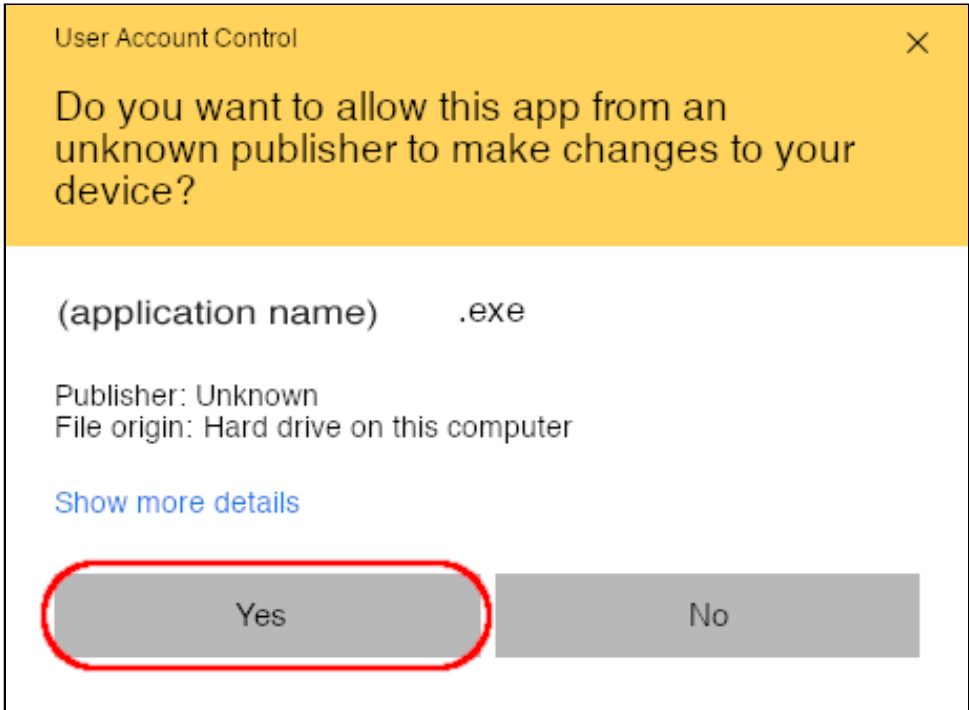
- 1. Double click on the ".exe" installer file.
- 2. If the Microsoft Defender screen is displayed, click "More info":



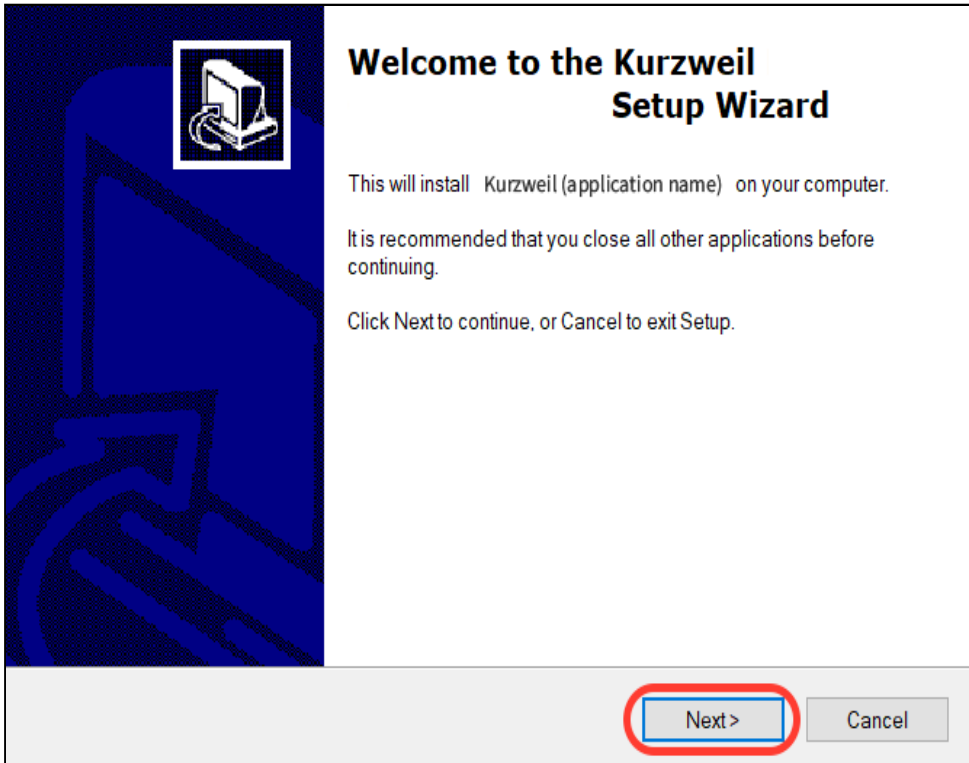
- 3. Next, click "Run anyway" to continue:



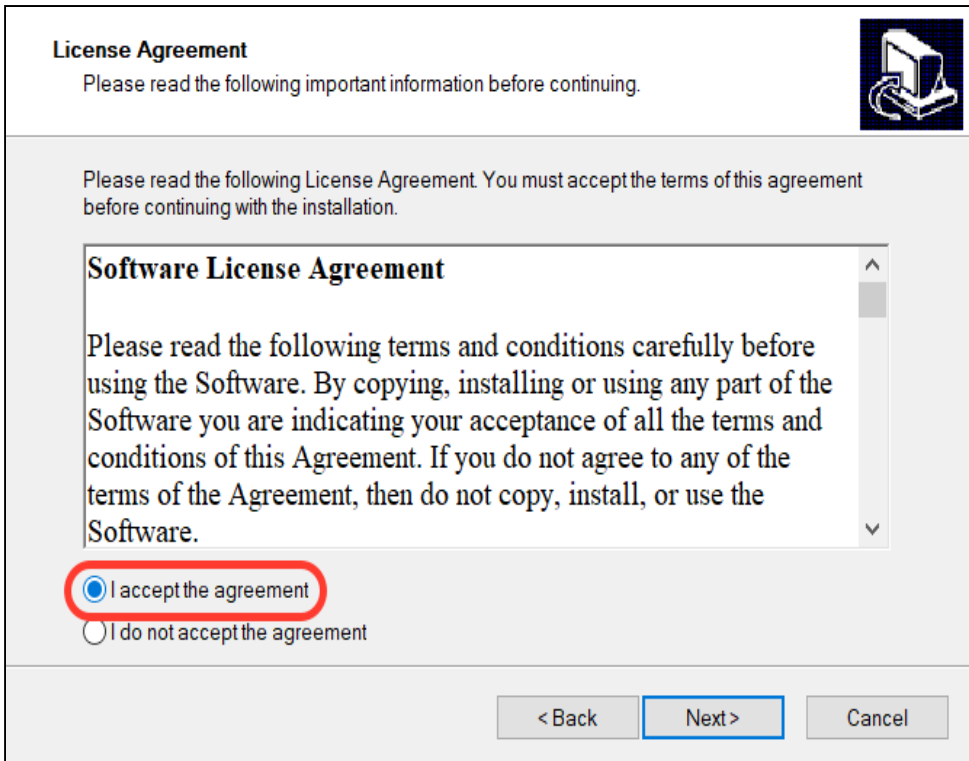
4. If the User Account Control screen is displayed, click "Yes":



5. Follow the steps in the Setup Wizard. Click Next:



6. Make sure you click "I accept the agreement", then click Next:



7. Select the Destination Location, then click Next:

Select Destination Location

Where should Kurzweil (application name) be installed?

Setup will install Kurzweil (application name) into the following folder.

To continue, click Next. If you would like to select a different folder, click Browse.

C:\Program Files\Kurzweil

Browse...

At least 37.3 MB of free disk space is required.

< Back

Next >

Cancel

8. Select the Start Menu Folder, then click Next:

Select Start Menu Folder

Where should Setup place the program's shortcuts?

Setup will create the program's shortcuts in the following Start Menu folder.

To continue, click Next. If you would like to select a different folder, click Browse.

Kurzweil Music Systems

Browse...

☐ Don't create a Start Menu folder

< Back

Next >

Cancel

9. Click Next:

Select Additional Tasks

Which additional tasks should be performed?

Select the additional tasks you would like Setup to perform while installing Kurzweil software then click Next.

Additional icons:

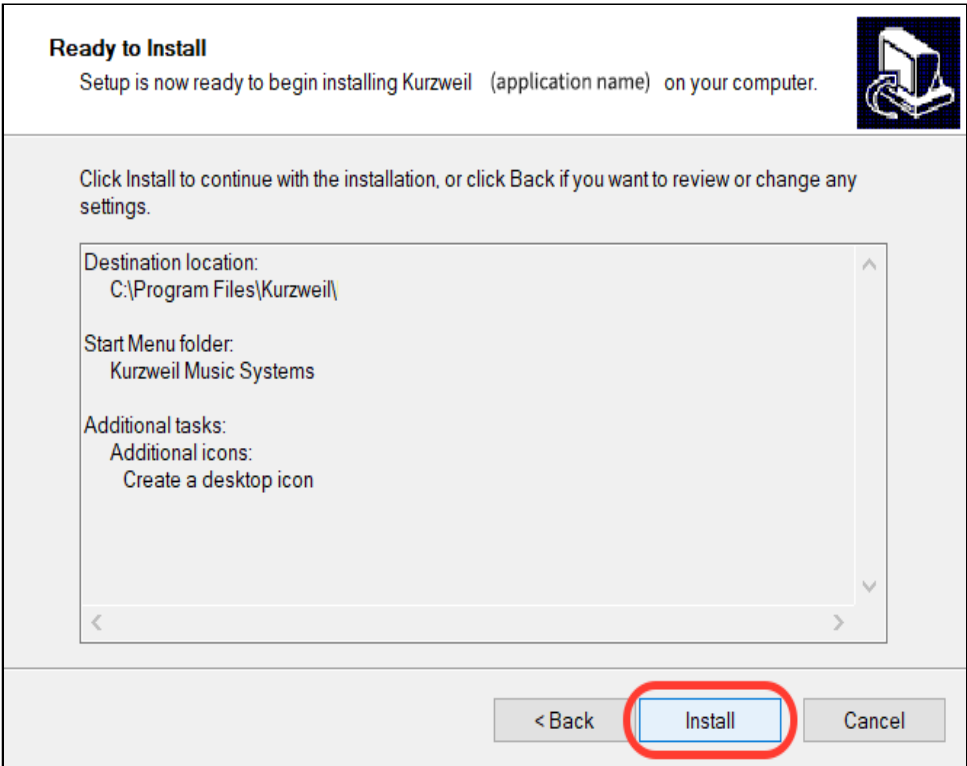
☒ Create a desktop icon

< Back

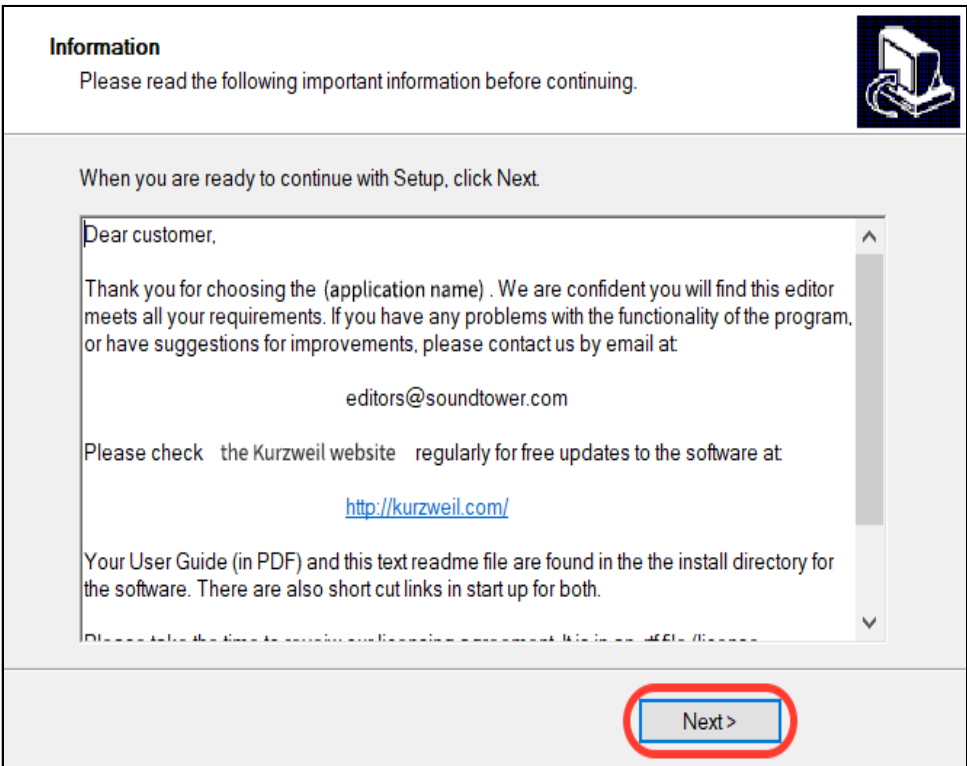
Next >

Cancel

10. Click Install:



11. Click Next:



12. Click Finish. If the "Launch" box is checked, the application will open:

